

CULVER CITY ROCK AND MINERAL CLUB
P.O. BOX 3324 Culver City, Ca 90231

AUG 2007

Monday, AUG13, 6:45 pm**Exec Committee :Multi-Purpose Room in the Veterans Bldg.**
Monday, AUG13, 7:30 pm.....**General Meeting:Multi-Purpose Room in the Veterans Bldg.**
(Program:Speaker Fred Ward, "OPALS")

ANNUAL CLUB



AND AUCTION



PRESIDENTS MESSAGE

The Gem Show did it again, a resounding success. The dealers were smiling and the visitors were lively. The Members moved around and filled in at books, plants, grab bags, games, membership, theft spotting, and, finally, breaking down. Boy Scouts showed up. Shep Koss of CFMS showed up along with Ron, Al, and Mike from the Sierra Pelona Rock Club of Newhall wearing their club shirts. Brett from the Oxnard club, the people who hand-made the educational rock display boxes, was there. I hope they can make several for our club.

The real success was in the club's effort and participation. That all happened because Rick, Leda, and Lucia did so much in preparation.

I enjoyed the show as a visitor and as a participant.

ALSO REMEMBER!!

"Picnic and Auction"

Saturday, August 18th at Carlson Park

Located at Braddock and Motor

(Carlson is a friendly neighborhood park)

Time: set up at 11am & Picnic at 12- 3 pm

Bring edibles to eat (Main dishes & Salads preferred)

and Items to Auction.

P.S. Hot Dogs provided.

Thank You.

Edgar, the Prez.

AUGUST PROGRAM

FRED WARD, "OPALS"

Coming to the Multi-Purpose Room in August -- famous gemstone photographer, FRED WARD. Mr. Ward brings the expertise of 14 years as a National Geographic gemstone photographer to his presentations. He knows the history, lore, and significance of all the major gemstones. He has written a series of books dealing with precious gems and their care.

For the August meeting (Monday, the 13th), I asked Fred to speak on OPALS. This is a topic and a speaker guaranteed to interest 99.9% of all newcomers and invited guests. Please let others know. You can check his website at: fredwardgems.com Feel free to email or otherwise inform all organizations who may have an interest in this presentation.

Give directions. Such as:

"After you park behind the Vet's Auditorium, stand and face the back of the building. Veer to your right and follow the curve of the building around until you find the patio with tables. Look to the left, the entrance will be obvious."

Ed Montgomery,
Program Chair

**MINUTES OF THE EXECUTIVE MTG
JULY 9, 2007**

• Those present: Ed Montgomery, Leda Rogers, Bruce Mensinger, Rick and Mary Ellen Shaffer, Dolores Dace, Anthony Ferrari, Lynne Lukert, Lorraine Murphy, Sue Acosta

• The meeting was called to order at 6:40pm by President Ed Montgomery. The minutes were approved as published in the Nugget.

• **Treasurer's report:** Mary Ellen Shaffer, Treasurer, reported the letter of thanks for the \$1,000 donation from the Culver City School system. Also she announced the renewal of 2 magazine subscriptions - Jewelry Arts (formerly Lapidary Journal) and Rock and Gem. Copies are available at the Shop. We are very solvent. It was suggested that a sub-committee be formed to explore our donation policy.

• It was moved and seconded that an Honorary Life Membership be bestowed on Anthony Chavez - Venice Adult School jewelry teacher and long time supporter of CCR & MC. It was passed unanimously.

• Leda Rogers, Show Co-Chair, said more volunteers were needed for Show set-up on Friday, July 13.

• **Membership:** Anthony Ferrari reported that Ellen Moe, Youth Program Chair, is the contact person for our developing relationship with the Boy Scouts. She will be checking out a special display box developed by the Oxnard-Ventura Rock Club for display of rock and minerals.

Anthony also discussed the questionnaire he developed for club members to express their interests for future programs and workshops. He mentioned the list of speakers put out by the CFMS. He suggested that the Hippensteels help with the program, Possible presenters for the workshops are being contacted.

There was a discussion about previous and future program presenters. We will need someone to coordinate the off-site workshops/programs and lectures.

• There will be a push to recruit new members at the Show.

• The meeting was adjourned at 7:30pm.

Sue Acosta
Recording Secretary

**MINUTES OF THE GENERAL MTG
JULY 9, 2007**

• The meeting was called to order at 7:40pm by dent Ed Montgomery who led the Pledge of Allegiance. A quorum being established, the minutes were approved as published in the Nugget

• **Announcements:** The annual Club pic-nic is set for Saturday, August 18 at Carlson Park located on Braddock and Duquesne. The thank you note from the Culver City School system was noted

• **Shop:** Bruce Mensinger, Shop Chair, said the Shop needs a new barrel of oil for the saws. It was moved and seconded to authorize the purchase of a barrel of oil for the best price available. It was passed. A barrel of oil will last about 4 years.

• **Membership:** Anthony Ferrari, Co-Chair, announced that the new member badges are available. Also an interest list of members who might like to purchase some rocks from an estate is being developed. He passed out his questionnaire to club members present to fill out and mentioned that a coordinator for future programs and workshops will be needed. President Ed Montgomery announced the Executive Committee's awarding of an Honorary Life Membership to Anthony Chavez, Venice Adult School jewelry teacher

• **Show Co-chair:** Leda Roge rs in charge of volunteers reviewed assignment of members.

• **Youth Programs Chair:** Ellen Moe announced that 32 Boy Scouts will be coming to the Show on Sunday at 1pm. They will be offered a talk about the rocks and minerals in the display case developed by the Oxnard-Ventura Club. The group will be divided into 3 and volunteers are needed to lead 2 of them around the Show.

• **Show Co-Chair:** Rick Shaffer reported on the badge system: Blue for members; red for dealers; yellow for security (only members can be security). It will be most important to wear them at closing on Sunday when the building has to be cleared. Various volunteer jobs were described.

• The meeting was adjourned at 8:40pm, to be followed by the Trading Post conducted by Steve Dover.

Sue Acosta
Recording Secretary

PROGRAM REPORT

The program was a slide presentation from the Club archives by Bruce Mensinger, Historian. He started with slides from the 1960's showing some field trips to collect specimens. He then showed the Shop, from its being built to the present.. This was followed by shots of the first "Nature's Fiesta of Gems" to last year's "Fiesta of Gems". We are fortunate to have such an accomplished historian who is modernizing the archives so that they are more readily available and computerized.

Sue Acosta
Recording Secretary

BIRTHDAYS



BettyKnoblock	1-Aug
AlexaPower	4-Aug
LedaRogers	10-Aug
BarbaraDaniels	17-Aug
BradSmith	19-Aug
LorraineMurphy	26-Aug

SUNSHINE

WELL WISHES to Larry Kelly, who broke his hip in a fall AND Jan Williams who is recovering from breast surgery. Hurry and get well, Will see you both at a meeting soon?

Lili Gelberg,
Sunshine Chair



WEB-SITE

FROM OUR WEBSITE "Mail Bag "

• My compliments on the show; I have been to a number of shows and so far CCRMC is the best!

Once again,
Thank you,
Jon Barnes

• Thank you Anthony for all the wonderful photos of the show.

Joyce Golden

• Well hello!

We are Craig & Kathy Polliard and had the joy of attending your show! My wife also won the Ocean Jasper Speare which is wonderful. A BIG thank you all for all your hard work on a great show, see ya next year!

Craig

Anthony Ferreria,
Web-Master

MEMBERSHIP

We would like to thanks and congratulate Grace Sato and Barbara Daniels for their nice and first Display to our show.

We are Welcoming our new members:

Jo Baxter-Miguel
Alana F Halperin
Mary Lynch
Christina Nordeen
George Olszewski
Kurt A Seifdel
Barbara Solomon
Maria Vasquez

and Returning Members :

Lilly Silver
Selene Soler

and new Lifetime Member:

Anthony Chavez

SHOW REPORT

THE FIESTA OF GEMS

Our 26th Annual "Fiesta of Gems" took place Saturday and Sunday, July 14&15th. From the set-up on Friday to the tear-down on Sunday night, everything moved



like clockwork. The volunteers knew what they were supposed to do, they did it. They brought out the cases on Friday and took them over to the auditorium along with books and books and more books.

Bruce Mensinger, Woody Shaffer, Rick Shaffer, Steve Dover, Gary Mitchell, put blue plastic sheeting around the tables for the dealers.

Barbara Daniels, Mary Ellen Shaffer, Maria Vasquez, Elsa Garcia, Barbara Shaffer, Barbara and Max Hippensteel and others set up the lights and cases and other things that needed to be done before a show.

Yes and also Grace Sato, Brian Lallement, Anthony Farrari, Jim Conway, Joyce Golden, Bob Verish also helped with the setup.

The big day came and what a day it was with Lorriane Murphy at the plants, Egar Montgomery, Mary Stein, Lynne Lukert at the Books, Delores Dace, Lisa Kidder, Patrick Kidder at the Front Desk, Ellen and Mindy Moe with the Children's games and Alexa Power, Sue Acosta in charge of hospitality. We were all feeling quite secure with Fred Reinhorn and Robert Thirlaway there.

The show was quite a success! We did hands over heels better than last year. The dealers were a very hap-

py bunch and that is what we like to see! I think everyone came out ahead this year. As you can see the show did not just happen, it took everyone who I mentioned above plus the dealers and of course the customers to bring this show to fruition. You can all give yourselves a pat on the back because you all did one heck of a job! Thanks and we'll be looking forward to.....

Leda Rogers
2007 Show Co-Chair

With a big sigh of relief we bid a fond farewell to the '2007 Fiesta Of Gems'. A lot of people said it was the best in three years, so we'll all take a bow and a deep breath before thinking of the 2008 show.

All the members who volunteered their time should feel proud of the way their Club performed this year! With between one third and one half of our current members helping out this year you all deserve a round of applause. This includes some of our newest members and of course some of our more senior members. We even had a couple of new hands helping out at the shop bringing out and putting away all of our 'stuff'.

I'm proud of the way our members pull together and helped one another during the show.

The show had approximately 700 visitors on Saturday and a little over 600 on Sunday; even though some of our dealers said they did better on Sunday (I guess the big buyers wait for the last day). We also made a profit with this show, and that helps keep our club running through the year.



Sincere thanks to all who helped out and a big 'thank you' to our dealers for coming to our show this year. Here's hoping all your projects turn out great in the coming year and don't forget 2008!

Oh! And don't forget the picnic in August where we can all talk about our experiences at the show.

Rick Shaffer
2007 Show Co-chair

MINERAL REPORT

Cruise to Ensenada!!!

There REALLY is no mineral report from me for this month because a little bug came to visit me and it is over-staying it non-welcome.

I do have some information on an upcoming trip that is a lot of fun and it is not very expensive for what you receive, four nights and all meals supplied plus entertainment. Very nice meals and service in the dining rooms at dinner.

The Monterey Park Gem Society has arranged a cruise in January 21-25 on the Royal Caribbean Ship, Monarch of the Seas with stops in San Diego, Catalina and Ensenada.

The purpose of the cruise are two three hour jewelry workshops, question and answer sessions with Frances Lau, a jewelry expert who also has a pearl farm and is a MPGS member. I have seen some beautiful things he has taught.

The stops usually include shore leave with tours if you like. It is extra cost for any tour.

Ensenada has a blowhole and a winery tour. The shopping is not a tour and is fun but requires a bit of walking though.

The ship has a swimming pool and hot tub, a rock climbing wall, a casino, evening shows and plenty of other entertainment and food. Maybe only the casino will cost you.

Lynne Lukert and I went last year and we even climbed part-way up the rock wall. Harness, climbing shoes and helmet provided. The weather was great.

For further information on the workshops and tools required, contact one of the following:

King Yee (626) 919-1177,

*Jane Fong (626) 281-0611

Francis Lau (626) 573-2753.

Don Warthen warthen@earthlink.net

**Jane Fong worked on the cruise last year and may be the best to contact.*

The following information is from:

- Joyce Curran, "PNR American Express Travel"
- for reservations call: 310 821-7692.
- Royal Caribbean Cruise Line, "Monarch of the Seas"
- Ship leaves from San Pedro on Jan.21-25,v2008 (Mon-Fri)

Inside Cabins:

- Category N \$295.47pp Deck 2
- Category M \$305.47pp Deck 3
- Category L \$315.47pp Deck 4
- Category K \$325.47pp Deck 5, 6, 7

Ocean View Cabins (with porthole or window):

- Category H \$335.47pp Deck 2
- Category F2 \$345.47pp Deck 4
- Category F1 \$355.47pp Deck 5
- Category SO \$385.47pp Deck 9 (larger cabin)

Balcony:

- Category JS \$615.47pp Deck 10 (junior suite)



Single occupancy rates will differ.

A deposit of \$100 pp is needed to hold the cabin. Balance will be due by November 1st.

Everyone needs a passport with at least six months left on it past the sail date in January. You must book your reservations in the first and last name as is listed on your passport.

You can check out the web page for Royal Caribbean, Monarch of the seas. Book early.

Lorraine Murphy,
Mineral Chair

SHOP REPORT

Shop Notes, Based on Observation and Experience of Sawing

Oil vs. water:

In a rock saw, oil is a far better lubricant, coolant and flushing agent than water. In general, more (reservoir capacity, flow to blade and kerf) is better. Oil gives the longest blade and saw life. On the other hand, water is cheaper, less messy and safe to use on absorbent rock such as some sandstone and opal in matrix.

Saw size:

When there is a choice, use the smallest saw that will do the job. Larger saws use thicker blades resulting in more waste of your rock. They also cost more to run and to repair when things go wrong. But don't overload any saw. Overloading leads to premature failure, uneven cutting and wasted rock.

Fast cut vs. slower cut:

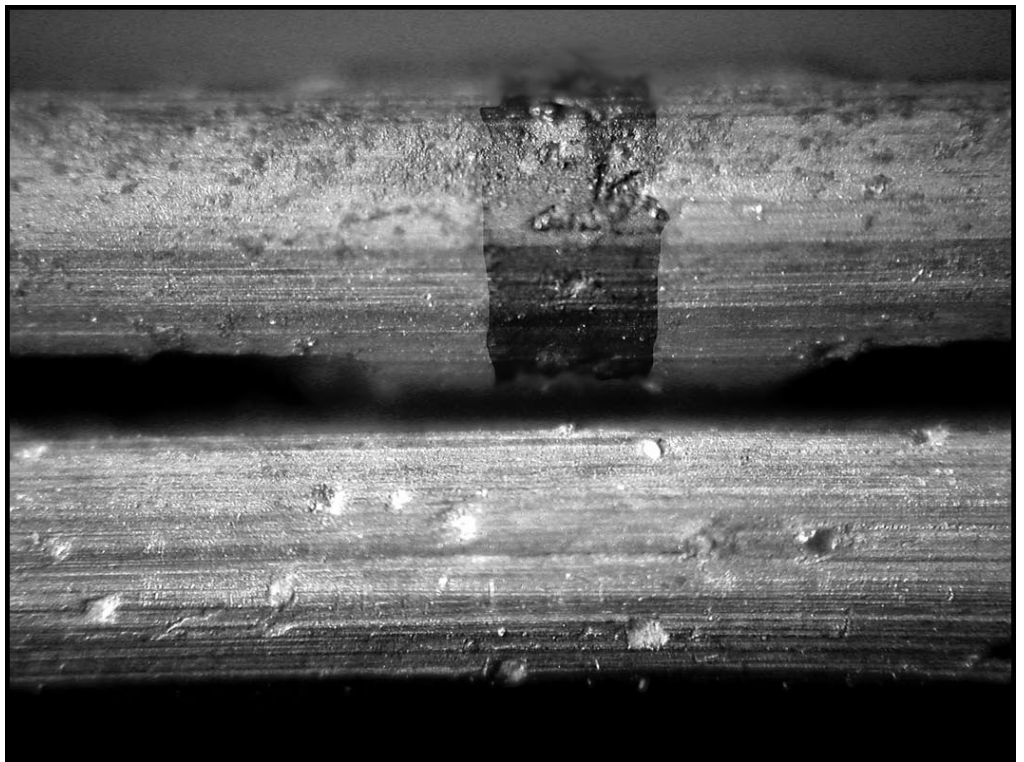
The rate of feed affects the quality of the cut. Gradual and steady cutting generally produces very smooth, straight cuts and is ideal for slabs, geodes and nodules that will be polished and displayed. Slabs cut for cabs can be rougher and more uneven because all of one surface will be ground away later in shaping the rounded surface. But the cab's bottom may also require flattening depending on your intended setting. Also, a flatter, smoother surface on a slab makes it easier to evaluate for pattern and color.

Why a fast feed rate produces rougher cuts:

In order to move through the rock faster more rock must be removed with each revolution of the blade. This requires more force in the direction of feed so that each diamond ploughs a deeper furrow through the rock. This force produces more friction and subsequent heat. The heat is concentrated on the rim of the blade, which

tries to expand, increasing the diameter and circumference of the blade. The core of the blade is cooler and resists the expansion. The net result is that forces are produced tending to force the blade into a wavy, potato chip shape. The thickness of the blade resists this warping (a thick blade better than a thin blade), but is always occurring to some extent. The wobble from side to side in the kerf is unstable resulting in grooving of the rock faces. No blade runs perfectly true and higher forces exaggerate any preexisting waviness.

Second, any existing unevenness or asymmetry of the blade edge itself tends to deflect the blade to one side of the cut. The thickness of the blade works to resist this deflection. Faster feed overcomes the ability



of the blade to resist sideways deflection. In long cuts this deflection progressively forces the blade into a dish shape (like a drummer's cymbal), which destroys the blade. We have lost several 24" and 18" blades this way over the years. Two nearly new 24" inch blades actually had the centers broken out due to metal fatigue caused by repeated blade deflection.

Bruce Mensinger
Shop Chairman

MONTHLY SHOW DATES AUG 2007

3-5 NIPOMO, CA: Orcutt Mineral Society; St. Joseph Church, 298 S. Thompson Ave.

4-5 SAN FRANCISCO, CA: San Francisco Gem & Mineral Society; San Francisco County Fair Bldg, Ninth Ave. & Lincoln Way: Hrs: Sat. 10-6 Sun 10-5

AGAIN DON'T FORGET!
"Picnic and Auction"
Saturday, August 18th
at Carlson Park

31 - Sept. 3 : FORT BRAGG, CA: Mendocino Coast Gem & Mineral Society, Town Hall, Main & LauraL; Hrs: Sat. & Sun 10-6; Mon. 10-4

PLACE YOUR AD HERE!

Club Members, we invite you to advertise in our newsletter! This is your chance to network with other club members.

The cost for approx. 2" High x 3.5" Wide is \$7.00 per insertion, payable in advance. Ad layouts, copy, or business cards must be received by the 10th of the month. Ad location is at the discretion of the Editor. See more details listed below in our standard announcement for the Nugget.

FIELD TRIPS

A Sponsered Federation Field Trip:

In August, San Joaquin Valley, CFMS to "JADE Cove:"

For information E-mail to Leader "Lew"

<helfrichsjewelrycreations@yahoo.com>

Anthony Ferrari,
Field Trip Co-Chair

MISCELLANEOUS TID-BITS

REMINDER: STORE "ICE" IN YOUR CELL-PHONE

A recent article from the Toronto Star, "the ICE idea", is catching on and it is a very simple, yet important method of contact for you or a loved one in case of an emergency. As cell phones are carried by the majority of the population, all you need to do is program the number of a contact person or persons and store the name as "ICE".

The idea was thought up by a paramedic who found that when they went to the scenes of accidents, there were always mobile phones with patients, but they didn't know which numbers to call. He therefore thought that it would be a good idea if there was a nationally recognized name to file "next of kin" under.

Following a disaster in London the East Anglian Ambulance Service has launched a national "In Case of Emergency" (ICE) campaign. The idea is that you store the word "ICE" in your mobile phone address book, and with it enter the number of the person you would want to be contacted 'In Case of Emergency'.

In an emergency situation, Emergency Services personnel and hospital staff would then be able to quickly contact your next of kin, by simply dialing the number programmed under "ICE".

Please forward this. It won't take too many "forwards" before everybody will know about this. It really could save your life, or put a loved one's mind at rest. For more than one contact name simply enter ICE1, ICE2, ICE3, etc... A great idea and it could make a difference!

via Worldwide Email, via Moroks 7/07

HINTS AND TIPS

Cutting geodes in the right place can be tricky. Try rolling the geode on a flat floor several times and marke the "up" side each time. Then cut on a plan parallel with the floor. Crystal growth inside the geode is probably most developed at the top and bottom of its resting position.

Original source unknown, *via* from Choo-Choo chatter, 3-4/04; *via* Rock Writings, 09/04; *via* Rockhound Rambling, 7/07

The purpose of the CULVER CITY ROCK & MINERAL CLUB is to bring together persons interested in the earth sciences, to engage in research and study in this realm, and to assist members in the collection and preservation of rocks and minerals and in the study of lapidary and related arts.....<http://www.culvercityrocks.org>

OFFICERS & CHAIRPERSONS 2007

PRESIDENT.....Ed Montgomery
VICE-PRESIDENT.....Gary Mitchell
TREASURER.....Mary Ellen Shaffer
RECORDING SECRETARY..... Sue Acosta
CORRESPONDING SECRETARY.....Leda Rogers
FEDERATION DIRECTOR.....Anthony Ferrari
FIELD TRIPS-Co-Chairs.....Ellen Moe
Anthony Ferrari
HISTORIAN.....Bruce Mensinger
LIBRARIAN.....Ted Hanf
MEMBERSHIP-Co-Chairs.....Anthony Ferrari
Lucia Pasquinelli
MINERALS.....Lorraine Murphy
PARLIAMENTARIAN..... OPEN
PHOTOGRAPHY - Co- Chair.....Sylvia Binkley
Leda Rogers
PROGRAM Co-Chair..... Ed Montgomery
PUBLICATIONS.....Lynne Lukert
PUBLICITY.....Brad Smith
SHOW.....Richard Shaffer
Leda Rogers
SHOP.....Bruce Mensinger
SOCIAL.....Sue Acosta
SUNSHINE.Lili Gelberg
TRADING POST.....Steve Dover
WEBMASTER.....Anthony Ferrari

BOARD OF DIRECTORS

Sue Acosta (2007)
Lorraine Murphy (2007)

Woody Shaffer(2008)
Gary Mitchell (2008)

MEETING SCHEDULES

General Meetings are held the second Monday of every month* at 7:30 p.m. in the Multi-Purpose Room in the Veterans Bldg., 413 Overland Ave. Enter from the rear door. Guests are always welcome.

Executive Committee Meetings are held the second Monday of every month*in the Multi-Purpose Room in the Veterans Bldg Veterans Auditorium. All club members are welcome.

*Meeting days occasionally change due to Monday holidays or, in July, because of the Fiesta Of Gems show

DUES & FEES

One time Initiation Fees:

Individuals	\$20.00
2 Persons/Same Address	\$25.00
Juniors	\$15.00

Yearly Membership Dues:

Individuals	\$25.00
2 Persons/Same Address	\$35.00
Juniors	\$10.00

(After July 1, dues are \$15.00, \$25.00 and \$5.00 respectively.)

SHOP INFORMATION

The shop is open to all members in good standing over the age of 13 (13-18 have certain restrictions) who sign an indemnification form. Instruction is available at all sessions. Practice slabs are available.

Location: 10866 Culver Blvd. in Culver City (behind the Boy Scout clubhouse and next to the paddle tennis courts)

Shop Phone: (310)836-4611

Hours:

Tuesday	7:30pm - 9:30pm	Gary Mitchell
Wednesday	10:00am - 2:00pm	Bruce Mensinger (open by appointment)
Thursday	10:00am - 2:00pm	Woody Shaffer
Saturday	11:00am - 3:00pm	Lynne Lukert
Sunday	1:00pm - 4:00pm	Bruce Mensinger

If no one shows, the shop may close early. If you plan to arrive at the shop more than a half hour after the opening time, phone the instructor

The Nugget

The deadline for all submissions is generally the 15th of every month. All articles or notes without a byline are written by the Editor. Permission to copy is freely given as long as proper credit is noted.

The *Nugget* accepts paid advertisements by club members and non-members. The cost for an eight of a page (approx.. 2” high x 3.5” wide) is \$7 per insertion, payable in advance. Ad location is at the discretion of the Editor. Ad layouts, copy, or business cards must be received by the 10th of the month. Send materials directly to Lynne Lukert, Editor, 513 1/2 N. Norton Ave., Los Angeles, CA 90004



the NUGGET

VOLUME 48
ISSUE 8
AUG, 2007

CULVER CITY ROCK & MINERAL
CR&MC CLUB, INC.
CULVER CITY, CALIFORNIA, USA

FIRST CLASS

the *Nugget*
Lynne Lukert, editor
513 1/2 N. Norton Ave.
Los Angeles, CA 90004

CULVER CITY ROCK & MINERAL CLUB

