

CULVER CITY ROCK AND MINERAL CLUB
P.O. BOX 3324 Culver City, CA 90231

MAY 2014

Monday, May 12, 6:30 PM Executive Meeting

7:30 PM General Meeting

Program: Shep Koss, Sharktooth Hill

PRESIDENT'S MESSAGE

As you read this, our Fiesta of Gems club show is only seven or eight weeks away. It's our big fund-raising event for the year and has earned a great reputation among both rockhounds and the local public because it is so well run. But now, in the final stretch before the show, we need the help of all members to make this year's event successful. There are several things you can do:

Volunteer to help at the show. We need lots of people for registration, games, plant sales, grab bags, security, geodes, prizes, and our club information table. All we ask of members is a couple hours each. Call Woody at the shop on Thursdays from 10 AM - 2 PM at 310-836-4611 to volunteer for a time slot/task at the show.

Display your collection, your lapidary projects, or your artwork in our display cases. The crowd loves to admire work like this, and everything is secure and under lock and key. Contact Steve Dover <skdover@yahoo.com> to reserve a case.

We're also looking for a couple of people to *work special projects* some time in June before the show. We need someone to set up a display at the Culver City Library to help advertise the show, and we need someone to coordinate prizes on Friday, June 27th, while we're setting up for the show. If you can lend a hand, please contact me as show chairman, <brad@greenheart.com>

One of the popular things we have for younger rockhounds is the grab bags full of rock samples.

We sell hundreds of pounds of them! To get ready for this year, Sue Acosta is looking for donations of *fabric and yarn* to use for the grab bags and several people to *help in sewing them*. If you can help, please get in touch with Sue at <zarenda2@yahoo.com>

Plant sales at the show is always very successful. Lorraine Murphy is growing and accumulating many for this year. She *need pots* for them, lots of pots, especially the 4" ones. And, if you have plants we can sell at the show, please bring them to the shop or the next membership meeting and we will get them to her..

If you have some *books or magazines* you would like to donate for sale at the show, please get them to the shop or bring them to the next meeting.

Brad Smith
President

MAY PROGRAM
May 12. Shep Koss
Sharktooth Hill

Shep Koss, rockhounding friend of many of our club's members and co-author of *Rockhounding California, 2nd: A Guide to the State's Best Rockhounding sites*, will tell us a short history of Sharktooth Hill and the surrounding area. Sharktooth Hills, 20 minutes Northeast of Bakersfield, is the most extensive marine bone bed in the world. Shep will explain how and why the fossil deposits are there. Sharktooth Hill is known for teeth from the Megalodon, the biggest prehistoric shark, larger than the modern great white sharks.

Shep will cover the current status of Sharktooth Hill and will bring a wide variety of samples. He will briefly talk about other areas of the country where similar

fossils are found and the differences.

**Charlene Aspray
Program Chair**



**MINERAL REPORT
The Wizard really lives in
Green Beryl City**

The 16th-century historian Brantome once blamed the death of King Charles IX of France on the “sacrilegious” act of engraving an emerald. The emerald in question had been brought back to Europe by Hernan Cortez, who was so fond of the extraordinary emerald that he had a Bible verse engraved upon it. This greatly upset Brantome, who attributed several unfortunate events to the act.

The word “emerald” derives, though various forms of Latin, from the Greek smargados, which is a very creative term for “green gem” beryl, so colored by either chromium or vanadium. Vanadium emeralds are not recognized in Europe, as the American jewelry industry specifically changed the definition of “emerald” in the 1960s to include specimens colored by vanadium.

Emeralds specifically occur in a range from yellow-green to blue-green, but are by necessity any medium to dark shade of green. Lighter gems are known as green beryl. While beryl has a hardness of 7.5-8 on

the Mohs hardness scale, most emeralds have lots of inclusions and are therefore only poorly resistant to breakage. It is the traditional birthstone for May.

Emerald is graded based on color, cut, clarity, and carat weight - a system called the four Cs of Connoisseurship. Top-grade emeralds must be vibrant green and highly transparent. Emeralds are graded by eye, so a gem with no visible inclusions is considered flawless

Emeralds have been mined in Egypt since 1500 BCE, and in India and Austria since at least the 14th century. Today, Colombia is the world’s largest producer of emeralds, and Zambia is the second biggest producer. Within the United States, emeralds have been found in Connecticut, Montana, Nevada, and the Carolinas.

To improve clarity and stability, most emeralds are oiled in the post-lapidary process. It is a generally accepted process which fills in surface-reaching cracks, usually with cedar oil. The U.S. Federal Trade



Commission requires that vendors disclose this treatment during sales. Emeralds can be graded on an enhancement scale: none, minor, moderate, or highly. However, this scale is applied differently by different gemological laboratories and there may be inconsistencies in the market.

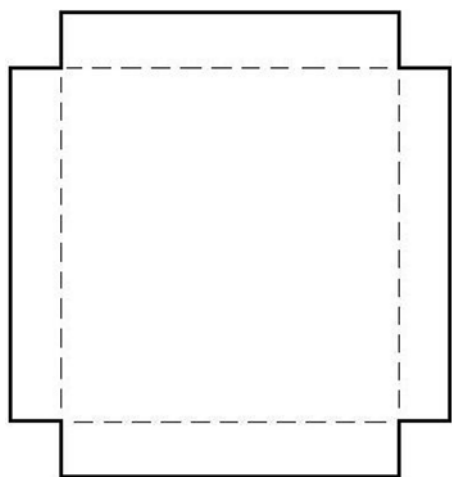
**Minda Moe
Mineral Chair**

BENCH TIPS

REVOLVING SOLDER PAD

Often when we're soldering we have multiple pieces on the pad or a single piece and would like to work on several sides of it during the same heat.

One of the ways to deal with this is to put your solder pad onto a turntable. That way you can rotate each piece into position when you need to or can rotate the pad to reach another side of a larger piece.



All you need to make one of these is a piece of aluminum sheet and an inexpensive turn table

assembly. A good hardware store will have both, although you can usually find the aluminum in the scrap pile of a local sheet metal shop.

In building a turntable for my 6 inch solder pad, I used a seven inch square piece of aluminum and cut out 1/2 inch notches from each corner. Then I used a bench vice to bend the sides along the dotted lines to form a tray that cradles the solder pad. I attached the tray to the turntable assembly with a couple small machine screws and nuts.

QUENCHING

Some jewelers drop the hot piece from soldering directly into the pickle. Do you hear that little hiss? The hot piece sends small droplets of acid into the air. This can rust nearby tools and can't be all that good to breathe either. To avoid this I quench in water. A coffee cup of water at the solder station lets me cool a soldered piece before dumping it into the pickle. It's also useful for annealing metals and for cooling off tweezers.

Get all 101 of Brad's bench tips in "Bench Tips for Jewelry Making" on Amazon

WELCOME NEW MEMBERS

Aubree Galbiso & Mallory Emrich
Maria Henson
Johnny & Jeannette Hjorth
Alexa Hunter

MAY BIRTHDAYS (May birthstone is Emerald)

Laurie Lizer 5/8
Lulu Lumel 5/9
Lenka Jensen 5/12
Karyn Smith 5/13
Margy Stein 5/16
Emilio Guillen 5/17



SHOP NEWS

Shop schedule

While no shop closures are anticipated for May, continue to check our website for closures and time changes at <http://www.culvercityrocks.org> or call the shop (310-836-4611) after the scheduled opening time to confirm that an instructor has arrived.

Equipment Availability

As of April 18 (as I write this report) all shop equipment is in good working order. The All-You-Need flat lap has been modified with the intent to make it easier to use. The former knob with variable number of washers has been replaced by a fixed threaded shaft and a larger knob. To use this new configuration, put the lap plate on the motor platform, add one washer, then screw the new knob onto the protruding threaded shaft, tightening just enough to hold the lap plate. No more trial-and-error about how many washers to use. Thank you, Woody.

Projects update

1) Trim saws oil mist: An inline radial fan and a metal inlet were installed in the existing duct for the left-side 10-inch trim saw. In addition, the main exhaust fan was cleaned to promote airflow. The increased air flow is very noticeable. A second inline fan and inlet will follow for the right-side 10-inch trim saw.

2) New oil test in one slab saw and one trim saw: The new-candidate-oil allergy and odor testing continue to be satisfactory. Misting was greater than previously but now the improved air-flow has mooted that problem.

3) The continuing test of blade cooling and life in the 24-inch slab saw continues. Preliminary testing was OK but several accidents that damaged the 24-inch blade occurred that couldn't reliably be assigned either to oil deficiency or user error. No further problems have occurred in the past two months.

4) The main remaining construction is installation of rain gutters, installing irrigation and sod in front of the Scout House (please, stay on the walkways), and additional asphalt sealer.

Call for volunteers

Jette Sorensen is leading a shop beautification and clean-up initiative. Its main goals are repair and replacement of water damaged ceiling panels, painting, and evaluation of what equipment to keep. We have several volunteers but more are needed. Contact Jette for more details. jetsorensen@gmail.com

Limited parking in back of the shop is open for use. Park on the asphalt, off the alley concrete to avoid a parking citation. Please respect the space reserved for the shop instructor next to the paddle-tennis court.

On behalf of the Shop Committee
Bruce Mensinger

MINUTES OF THE EXECUTIVE MEETING APRIL 7, 2014

Those present: Charlene Aspray, Felice Ganz, Ana Maria Guimaraes, Bruce Mensinger, Janice Metz, Darrell Robb, Mary Ellen Shaffer, Rick Shaffer, Brad Smith and Jette Sorensen.

The meeting was called to order at 6:45 PM by President Brad Smith.

The March executive meeting minutes published in the April Nugget were approved as read.

Treasurer Report: Darrell Robb reported the Club was solvent. He informed the Rock & Gem magazine subscription was due for renewal. A motion was approved to purchase a three-year subscription.

2014 Budget: Brad Smith requested each officer to develop a budget for their chairs, to be

discussed and approved at the May meeting.

Social Report Mary Ellen Shaffer made a motion for the Club to send flowers to Leda Rogers, who was recovering from surgery; motion approved.

Publicity Report: Janice Metz reported the Club now has a Twitter account; #culvercityrocks. She informed she had publicized the April meeting on Twitter, in newspapers, on Facebook and Yahoo Groups. Ms. Metz also informed she had been asked to help publicize the California Federation of Mineralogical Societies show in exchange for them to publicize the Club's show. Jette Sorensen committed to placing a note on the Club's website.

Ms. Metz also reported that Ken Rogers had asked for volunteers to help at the Club's booth at the LA Beads Society Bazaar and said she would publish the request on Yahoo Groups.

Membership Report: Felice Ganz reported that the Club had 102 members. All members who had not renewed their membership were called by Ken Smith. She also reported that all pending badges had been received.

Webmaster Report:

Jette Sorensen made a motion to move the Club's domain name to the website hosting company; motion approved. She also requested that official mass mailings to the membership go through the official mailing list and the Club's email address list

Show Report: Brad Smith reported that the post cards were not on schedule. Drafts needed to be finalized for approval; the holdup would shorten the printing time and delay delivery to vendors for mailing to their private lists. Bruce Mensinger, who has already taken photographs for the postcard said he would provide Brad with a disk with the photos. Jette Sorensen committed to helping him to prepare a display for the photos to facilitate the selection.

Workshop Report: Brad Smith informed the five workshops held had been very successful with a total of 42 attendees and yielding more than \$300. He said that five more workshop had been scheduled between April and June.

Education: Brad Smith made a motion to donate the proceeds from the Club's last show raffle to the Friends of the Culver City Scout House (FOCCSH); motion approved.

New Business: A motion was approved for the Club to spend the same amount as last year towards tickets to the Culver City Boy Scouts Annual Spaghetti Dinner and donate them to the Culver City Senior Center. Jette Sorensen requested that the Club considers other locations for the Club's holiday party, so that the party is not subject to the time constraints of the Rotary Plaza.

The meeting adjourned at 7:36 PM

Submitted by **Ana Maria Guimaraes**
Recording Secretary

**MINUTES OF THE GENERAL MEETING
APRIL 7, 2014**

The meeting was called to order at 7:45 PM, the Pledge of Allegiance was made and a quorum was established.

Four guests were introduced and welcomed.

The March general meeting minutes published in the April Nugget were approved as read.

Felice Ganz reported that the Club had 102 members and that all pending badges had been received.

A motion was approved for the Club to donate proceeds from last year's show raffle to the FOCCSH.

Brad Smith reported that the five workshops held had been very successful with a total of 42 attendees. He informed that five more workshop had been

scheduled between April and June and were listed on the Club's website. Club members interested in giving a workshop should contact him.

Brad Smith informed the Club had a new Twitter account, #culvercityrocks.

Brad Smith reminded that the show is coming up at the end of June and volunteers are needed for several related activities. Sing-up sheets are available during the break. Mr. Smith also informed that 20 display cases were available to club members for displaying items at the show.

Rick Shaffer announced that the shop needed an additional supervisor on Wednesdays or Sundays. Those interested should contact Brad Smith or Bruce Mensinger, and would need to understand the functions of the various tools and machines and be able to make minor repairs. Mr. Shaffer also informed that the shop is closed on Easter Sunday.

Brad Smith requested a volunteer to support the Club's demonstration booth at the Bead Society of Los Angeles Bazaar on April 27th. Barbra Hippensteel volunteered.

Joyce Watanabe, Merit Badge Counselor at the El Segundo Boys Scouts announced that the scouts would work on a geology merit badge during their summer camp. Ms. Watanabe requested volunteers to support a preparatory geology session on June 2 at 7:15 PM at the El Segundo Scout House. Those interested are to contact Ms. Watanabe at 310-372-2501, 310-529-1966 or joycecarolwatanabe@gmail.com.

Jette Sorensen informed that only half of the emails sent with The Nugget seem to be opened; she asked the membership to make sure they were not going to the junk mail folder.

Rocky Rhodes announced a field trip on April 26th to Clear Creek, where serpentine, agate and jade can be found.

A break was held at 8:08 PM for refreshments, followed by the April Program.

Submitted by **Ana Maria Guimaraes**
Recording Secretary

APRIL PROGRAM REPORT

Charlene Aspray introduced Roger Halas, a writer for the Lapidary journal and jewelry artist. Mr. Halas seeks inspiration in mythology, science fiction and evolution themes for the pieces he designs. He delivered an engaging presentation where he demonstrated the use of his favorite tools and techniques to produce interesting jewelry designs. Mr. Halas, who never had formal training as a jewelry designer, told how he first learned jewelry making from a book on Native American jewelry making. He generously shared tricks and techniques and answered several questions from the audience. Mr. Halas also brought a beautiful bracelet made by him, which was raffled at the meeting.

Ana Maria Guimaraes
Recording Secretary

LIBRARY ADDITION

There are a zillion books written on jewelry making and once in a blue moon, one comes along that is destined to end up as a "must-have" book or "bible." One such book hit the market in February, "Patina: 300+ Coloration Effects for Jewelers & Metalsmiths" by Matthew Runfola. It is an all-skills-level book that is incredibly well organized. It covers patination of steel, stainless steel, copper, brass, bronze, silver, and aluminum. There are more methods covered than I knew existed - immersion, brush and foam brush application, spraying, fuming, layering, using resists, hot and cold applications. With full size pictures and step-by-step instructions, you will be inspired to add new dimensions to your creations.

The book has been added to the library at the shop. Of other “must-have” or “Bibles” on jewelry making, available in the shop library, I can - off the top of my head - think of these:

The Complete Metalsmith, by Tim McCreight
Foldforming, by Charles Lewton-Brain
Hydraulic Die Forming for Jewelers and Metalsmiths, by Susan Kingsley

There is a dedicated program for the library contents on the computer by the coffee maker. When borrowing a book from the library, log the required information. Books must be returned within 30 days of taking them out.

Jette Sorensen

UPCOMING SHOWS

May 2 - 4: BISHOP, CA
Lone Pine Gem & Mineral Society
Bishop Fairgrounds
Sierra Street & Fair Drive
Hours: Fri 5 - 10; Sat 9 - 7; Sun 10 - 3
Contact: Steve Mobley, (760) 793-6025
Email: steve@littlebearrocks.com

May 3 - 4: JACKSON, CA
Amador County Gem & Mineral Society
Kennedy Mine
12594 Kennedy Mine Rd (off Hwys 49/88)
Hours: 10 - 4 daily
Contact: Margaret Kolaczyk
Email: blackwolf@volcano.net

May 3 - 4: ANAHEIM, CA
Searchers Gem & Mineral Society
Brookhurst Community Center
2271 W. Crescent Avenue
Hours: Sat 10 - 5; Sun 10 - 4:30
Contact: Robert & Sharon Burson, (562) 860-5938; cell (562) 706-2054
Email: bursonrocks@verizon.net
Website: www.searchersrocks.org

May 3 - 4: PASO ROBLES, CA
Santa Lucia Rockhounds
Pioneer Park & Museum
2010 Riverside Avenue
Hours: 9 - 5 daily
Kim Noyes, (805) 610-0603
Email: kimnoyes@gmail.com
Website: www.slockhounds.org

May 3 - 4: YUCAIPA, CA
Yucaipa Valley Gem & Mineral Society
Scherer Senior Center
12202 First Street
Hours: Sat 10 - 6, Sun 10 - 4
Contact: Lee Peterson, (909) 794-0731
Email: res09ayd@verizon.net
Website: www.yvgms.org/wiki

May 10 - 11: LANCASTER, CA
Antelope Gem & Mineral Society
Lancaster High School
44701 - 32nd Street West
Hours: 9 - 5 daily
Contact: CJ Quitariano, (661) 209-9092,
Email: cj_q62@yahoo.com
Website: www.avgem.weebly.com



CALIFORNIA FEDERATION SHOW

May 30 - June 1: POMONA, CA
2014 CFMS Show and Conference
Fairplex, 1101 W. McKinley Ave
POMONA, CA to be hosted by the Pasadena Lapidary Society
Show Website: www.cfms2014show.com



May 31 - June 1: ESCONDIDO, CA
Palomar Gem & Mineral Club
California Center for the Arts
1340 N. Escondido Blvd.
Hours: Sat 10 - 5; Sun 10 - 4
Contact: Michael Bagstad, (760) 489-1897
Email: gemshow@palomargem.org
Website: www.palomargem.org

UPCOMING WORKSHOPS

Wire Weaving Basics

Instructor: Sylvia Binkley - <sbinkley119@cs.com>

Saturday May 3 from 10:30AM – 2:30PM

COST: \$56/per person for a 4-hour class (non-members, please add \$10)

MATERIALS: Please bring the following materials to class:

1. Round-nose pliers
2. Flat-nose pliers
3. Wire cutters
4. Eye protection
5. A small

bead of your choice – should be a maximum of 1 inch in length

6. A low-speed drill if you have one

Instructor will supply copper wire and some tools will be available for general use. Instructor will bring one low-speed drill. If you own one, please bring it to class so we have more for people to use.



Expand your traditional wire-wrapping repertoire in this 4-hour hands-on beginning workshop taught by Sylvia. You'll learn some basic wire-weaving techniques and apply them to create a pendant that you can proudly show off.

You will receive PDF handouts via email prior to the class

CHAINMAILLE EARRINGS

Instructor: Eileen Karrigan - <ekarrigan@gmail.com>

May 5 from 7:00PM – 9:30 PM

COST: \$30/per person for the class (non-members,

please add \$10)

MATERIALS: All materials and tools will be supplied by instructor. Please bring reading glasses or magnifying visor if needed.

Learn the ancient art of chainmaille using the Byzantine weave. Make a pretty pair of chandelier earrings using chainmaille techniques. Class will also cover making bead loops for the beads that dangled from the earrings.



Chevron “V” Beaded Bracelet

Instructor: Janice Metz - <JenFT4@aol.com>

Saturday May 10 from 10:00AM – 5:00PM

COST: \$50/per person for a 4-hour class (non-members, please add \$10)

MATERIALS: Materials list will be available upon your reservation. We will be making a Chevron V Design Bracelet with or without embellishments – your choice. The top picture is the class project or you can add more beads to jazz it up. Easy Level.



To sign up for a workshop, send an email to the instructor at their <email address> listed above.

MORE WORKSHOPS , SCHEDULED AND IN THE PLANNING STAGE

June 7 - Broom Casting - Brad Smith

Sometime in July - Jeweler Saw 101 (and piercing.)

Many more are in the planning stage.

The purpose of the CULVER CITY ROCK & MINERAL CLUB is to bring together persons interested in the earth sciences, to engage in research and study in this realm, and to assist members in the collection and preservation of rocks and minerals and in the study of lapidary and related arts.....<http://www.culvercityrocks.org>

Officers for 2014

President - Brad Smith

Vice President - Steve Dover

Treasurer - Darrell Robb

Recording Secretary - Ana Maria Guimaraes

Corresponding Secretary - Leda Rogers

Education - Joe Porrazzo

Federation Director - Ellen Moe

Field trips - Co-Chairs Rocky and Cole Rhodes

Historian - Bruce Mensinger

Librarian - Bruce Mensinger

Membership - Felice Ganz

Minerals - Minda Moe

Parliamentarian - Jette Sorensen

Photography - Bruce Mensinger

Programs - Charlene Aspray

Publications - Lynne Lukert

Co-Chairs Barbara Fier and Jan Ferguson

Publicity: Janice Metz

Show - Brad Smith (Acting Show Chair)

Shop Committee (President, Vice President,
committee members)

Social - Mary Ellen Shaffer

Co-Chair Grace Sato

Sunshine - Leda Rogers

Trading Post - Steve Dover, Co-Chair Minda Moe

Web Master - Jette Sorensen

Board of Directors:

Ellen Moe (2014)

Bruce Mensinger (2014)

Rick Shaffer (2015)

Jette Sorensen (2015)

MEETING SCHEDULE

General Meetings are held the second Monday of every month* at 7:30 p.m. in the Multi-Purpose Room in the Veterans Bldg., 4117 Overland Ave. Enter from the rear door. Guests are always welcome.

Executive Committee Meetings are held the second Monday of every month* in the Multi-Purpose Room in the Veterans Bldg. Auditorium. All club members are welcome.

*Meeting days occasionally change due to Monday holidays or in July, because of the Fiesta Of Gems show. Check the club's website for the current schedule.

DUES & FEES

One time Initiation Fees:

Individuals	\$20.00
2 Persons/Same Address	\$25.00
Juniors	\$15.00

Yearly Membership Dues:

Individuals	\$25.00
2 Persons/Same Address	\$35.00
Juniors	\$10.00

(After July 1, dues are \$15.00, \$25.00 and \$5.00 respectively.)

SHOP INFORMATION

The shop is open to all members in good standing over the age of 18 who sign an indemnification form. Junior members (13 - 18) must be accompanied by an adult. Instruction is available at all sessions. Practice slabs are available.

Location: 10866 Culver Blvd. in Culver City (behind the Boy Scout clubhouse and next to the paddle tennis courts)

Shop Phone: (310) 836-4611

Hours:

Tuesday 7 - 9:30 PM - Bruce Mensinger

Wednesday 10 AM - 2 PM - Vern Lowe

(Open by appointment)

Thursday 10 AM - 2 PM - Woody Shaffer

Saturday Noon - 4 PM - Lynne Lukert

Sunday Noon - 4 PM - Rick Shaffer

If no one shows, the shop may close early. If you plan to arrive more than a half hour after the opening time, phone the instructor

The Nugget

The deadline for all submissions is generally the 15th of every month. All articles or notes without a byline are written by the Editor. Permission to copy is freely given as long as proper credit is noted.

The *Nugget* accepts paid advertisements by club members and non-members. The cost for an eighth of a page (approx. 2" high x 3.5" wide) is \$7 per insertion, payable in advance. Ad location is at the discretion of the Editor. Ad layouts, copy, or business cards must be received by the 10th of the month. Send materials directly to Lynne Lukert, Editor, 601 N. Bronson Ave., Los Angeles, CA 90004



the NUGGET

VOLUME 54
ISSUE 5
2014

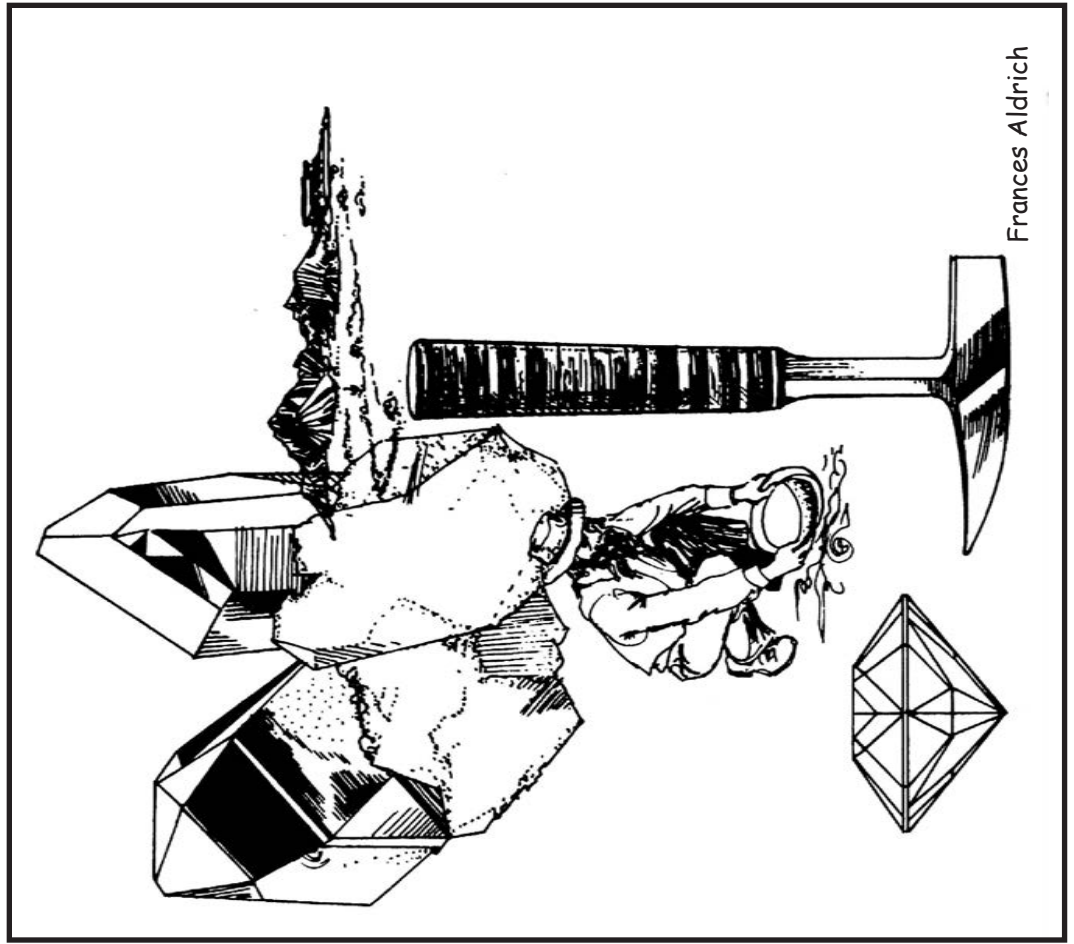
CULVER CITY ROCK & MINERAL
CR&MC CLUB, INC.
CULVER CITY, CALIFORNIA, USA

FIRST CLASS

CULVER CITY ROCK & MINERAL CLUB

Address Change Requested

The Nugget
P.O. Box 3324
Culver City, CA 90231



Frances Aldrich