

**CULVER CITY ROCK AND MINERAL CLUB  
P.O. BOX 3324 Culver City, CA 90231**



## AUGUST 2014

**Monday, August 11, 2014 6:30 pm Executive Meeting**  
**Monday, August 11, 2014 7:30 pm General Meeting**  
**Program: "Agate Collecting in the Mojave"**

### PRESIDENT'S MESSAGE

Our show last month was quite successful and enjoyed by all. Attendance was good and kept our vendors happy. One even mentioned that it was his 2nd best show ever at our site.

I want to thank our show team for doing an excellent job during the year to get out the publicity, line up vendors, grow plants, organize classes, design advertising, sell raffle tickets, buy supplies, and sew grab bags. And heartfelt thanks to all those who volunteered to set up the show, oversee the displays, run the games, bake the cookies, cut the geodes, organize the hospitality, take the pictures, arrange the magazines, sell the plants, provide the security, announce the winners, and finally pack up when all was done. Without all this help from many club members, the Fiesta of Gems would never have earned such a good reputation. My thanks to each and everyone who helped.

With the fall season coming on all too quickly, I have asked Jette Sorensen to convene a nominating committee to develop a slate of new officers for next year. This list should be ready for balloting in November. A clubs like ours is only as strong as

its members' commitment to help move it forward. So if you have an interest in helping the club on any of our standing committees next year, please contact Jette at <jetsorensen@gmail.com> over the next few weeks.

**Brad Smith**  
President

### AUGUST PROGRAM

#### **Justin Zzyzx** **"Agates Collecting in the Mojave"**

Join us for an informative and entertaining evening with Justin Zzyzx. Justin will give us an insight into agate collecting in the Mojave area and his latest project, cutthatagate.com

Many of you know Justin as one of CCRMC's past field trip leaders and mineral show chairmen. Justin is prominent in the gem and mineral community for his notable work exposing fakes and forgeries in the mineral industry. He recently spoke at the NY/NJ Mineral Show and will be a featured speaker at WildAcres Fall Gathering later this year. A link can be found at [www.FortySevenPress.com](http://www.FortySevenPress.com).

**Charlene Aspray**  
Program Chair

## MINERAL REPORT

### Not for Consumption

Asbestos is actually a set of six minerals, which share the characteristic of having long, thin fibrous crystals (the included picture is of asbestos crystals, taken with a scanning electron microscope). There are two classes of asbestos minerals – serpentine and amphibole.

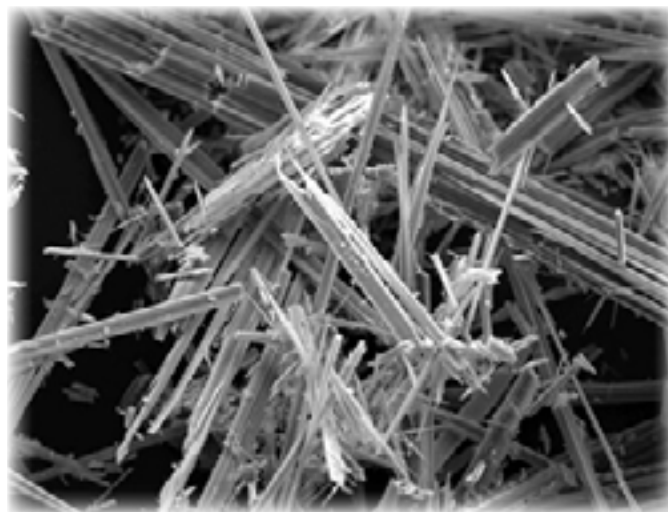
Chrysotile is the only member of the serpentine class, and is obtained from serpentinite. It accounts for roughly 95% of the asbestos found in buildings in America. It is also called white asbestos, though it ranges in color from gray to green. It is very soft, ranking at 2.5 on the Mohs scale of hardness.

The amphibole class consists of amosite, crocidolite, tremolite, anthophyllite, and actinolite. The amphibole minerals are much harder than Chrysolite, coming in at 5 or 6 on the Mohs scale. Amosite is a form of grunerite that is commonly called brown asbestos. Crocidolite is a fibrous form of riebeckite, and is often called blue asbestos. It is considered the most hazardous, and has an association to mesothelioma. Tremolite can be white, gray, lavender, pink, light green, or light yellow. Nephrite, a mineral in jade, is a non-fibrous green variety of tremolite. Anthophyllite can be gray, green, brown, or beige. Actinolite is commonly found in metamorphic rocks, and some forms are used as gemstones.

Human civilizations have used asbestos for at least 4,500 years. A civilization in East Finland strengthened their cooking utensils with anthophyllite. Some ancient sources contain claims that wealthy Persian kings amazed their guests by throwing dirty linens into fire to clean them. These cloths were most likely made of asbestos. Marco Polo also wrote about cloth that could not be burnt in fire.

The asbestos minerals became popular in the construction and manufacturing industries during the industrial era because they aid in sound absorption, exhibit desirable tensile strength, and are resistant

to fire, heat, and chemical damage. They were used in drywall, plaster, vinyl, gas mask filters, and stage curtains for many years.



Asbestos crystals have detrimental health effects, and should be treated carefully if added to a mineral collection. Pliny the Younger is said to have written that slaves who worked with asbestos became ill, though it may be an apocryphal tale. Large numbers of early deaths and lung problems were noted in asbestos-mining towns in the early 1900s. However, asbestos exposure only becomes a health concern when high concentrations of asbestos fibers are inhaled over a long time period – so the average rockhound shouldn't worry about the asbestos in their collection.

**Minda Moe**  
**Mineral Chair**

## MEMBERSHIP REPORT

### WELCOME NEW MEMBERS

Rose Klapman  
Christina M Grande  
June Yamada  
Julia M Lutz  
Kevin Joyce  
Holly Westhoff  
Richard "Dutch" Stowe  
Christian C Burke  
Jyenny Babcock  
Esther L Maire  
Janet E Wise

## BENCH TIPS

### SETTING A RIVET

Many sources tell you to use a small cross pie hammer for riveting, but I've found it's a lot easier to hit the rivet wire when using a small ball pie. The smaller the better. I'm using one now that's about 3/8 inch in diameter on the back of a chasing hammer, but I've been thinking that a 1/4 inch ball might be even better.

### SHEET WAX WITH ADHESIVE

While shopping in the Los Angeles jewelry district for supplies for a class, I found a new product that may interest you. Often I want to increase the thickness of a model by adding a layer of wax on the back side. For instance, models like a leaf or a flower petal do not cast well unless you add a little extra thickness. The problem is trying to apply a coating of wax that's smooth and even.

The new product I found is a soft sheet wax with an adhesive coating. This lets me easily add thickness to a very thin model. For instance, press it onto a leaf, trim the wax to the leaf shape, and then gently bend the sandwich to the contour you want. The wax is available in a number of different thicknesses from about 26 ga to 14 ga.

If interested, my supplier is

Jewelry Tools & Supplies  
412 W. 6th Street #1011  
Los Angeles, CA 90014  
213 624-8224  
jtstech@sbcglobal.net

Get all 101 of Brad's bench tips in "Bench Tips for Jewelry Making" on Amazon.com.

## PROGRAM REPORT

Program Chair Charlene Aspray introduced the July guest speaker, Gerard Pope. Mr. Pope is a jewelry and gem trader who recently returned from a trip to the Mogok mines in Myanmar. The mines produce several stones, such as sapphires, rubies and tourmalines. Very little tourism is allowed in Mogok. Mr. Pope described his visit to private mines, his experience with government officials as well as the local people and discussed different mining techniques used at the valley. He showed beautiful, interesting photographs and answered several questions from the audience.

Submitted by **Ana Maria Guimaraes**  
**Recording Secretary**

## AUGUST BIRTHDAYS



Barbara Fier	8/1
Paige Sorensen	8/3
Julia DChase	8/7
Maria I Hansen	8/8
Minda Moe	8/10
Leda Rogers	8/10
Joyce Watanabe	8/10
Charla Gardner	8/11
Mike Huwe	8/16
Pat Zayas	8/16
Bradford M Smith	8/19
Jeannette Hjorth	8/26
Lorraine H Murphy	8/26
Kevin Joyce	8/30

---

## MINUTES OF THE EXECUTIVE MEETING JULY 14, 2014

Those present: Charlene Aspray, Steve Dover, Felice Ganz, D.J. Gervais, Ana Maria Guimaraes, Bruce Mensinger, Darrell Robb, Leda Rogers, Jette Sorensen and Janelle Williams.

The meeting was called to order at 6:47pm by Steve Dover.

The June executive meeting minutes published in the July Nugget were approved as read.

**Treasurer Report:** Darrell Robb reported the Club was solvent.

**Show Report:** Janelle Williams reported that two incidents took place at the show. One vendor employee behaved inappropriately due to her bag having been stolen – the problem was not due to lack of security but rather due to the vendor allowing customers to enter her booth where they could have access to personal items. Ms. Williams said the employee would not be allowed to return in future events. She also recommended that security staff wears security vests in future shows. Also, Ms. Williams reported that a customer complained via email about the lack of ethics from another vendor, who therefore will not be invited back to the show.

**Summer Picnic:** Steve Dover indicated that the picnic would take place on 9/20 from 10am to 4pm, as the park facilities would not be available sooner. A discussion of alternative locations followed.

**Corresponding Secretary:** Leda Rogers clarified that she is not the corresponding secretary of the club.

**Library Report:** Bruce Mensinger reported that six disks containing videos and the GIA Journal editions had been stolen from the library. There is a back-up of the Journal, but not of the movies. He also indicated that the two book databases could potentially be out of synch.

**Membership Report:** Felice Ganz indicated she has yet to determine the current total of members.

**Program Report:** Charlene Aspray indicated she was yet to identify speakers for September and October. Justin Zzyzx had been lined up to discuss agates in August.

**New Business:** Bruce Mensinger asked that board members ensure items stored at the shop are okay be donated or discarded before doing so.

The meeting adjourned at 7:24pm

Submitted by **Ana Maria Guimaraes**  
**Recording Secretary**

## MINUTES OF THE GENERAL MEETING JULY 14, 2014

The meeting was called to order at 7:36pm, the pledge of allegiance was recited and a quorum was established.

Three guests were introduced and welcomed.

The June general meeting minutes published in the July Nugget were approved as read.

Treasurer Darrell Robb reported the Club was solvent and that the show was very successful.

Program Chair Charlene Aspray indicated that there would be a silent auction in the October/November timeframe and asked members to bring labeled items to be auctioned. She also announced that Justin Zzyzx would be the August speaker, and would discuss Mojave Desert agates.

Vice President Steve Dover indicated that the Club's summer picnic would take place on 9/20 from 10am to 4pm at Lindberg Park. A silent auction would also take place at the picnic, but the Club had sufficient items for it.

A break was taken at 7:46pm and a raffle was held before the meeting resumed for the July Program.

Submitted by **Ana Maria Guimaraes**  
**Recording Secretary**



# FIESTA OF GEMS WRAP UP



Photos by Bruce Mensinger



## SHOP NEWS

### Shop schedule

The shop will be open as scheduled this month except on Wednesdays. Continue to check our website for closures and time changes at [HTTP://www.culvercityrocks.org](http://www.culvercityrocks.org) or call the shop (310-836-4611) after the scheduled opening time to confirm that an instructor has arrived.

### Equipment availability

As of July 18 (as I write this report) all shop equipment is in good working order and ready for you to use.

### Projects update

1) Trim saws oil mist: The inline radial fan and metal inlet installed in the existing duct for the left-side 10-inch trim saw continues to work well. In addition, the main exhaust fan, cleaned to promote better airflow has increased air flow very noticeably.

2) New oil test in two slab saws and one trim saw: The new-candidate-oil allergy and odor testing continue to be satisfactory. Misting is greater than previously but the improved air-flow has mooted that problem. The continuing test of blade cooling and life in the 24-inch and 16-inch slab saws continues. Testing to date has uncovered no problems to converting the remaining saws.

3) The main remaining construction is installation of rain gutters and additional asphalt sealer. Lawn planting in front of the Scout House has begun; please stay on the paved walkways.

4) Call for volunteers; Jette Sorensen is leading a shop beautification and clean-up initiative. Its main goals are repair and replacement of water damaged ceiling panels, painting, and evaluation of what equipment to keep. We have several volunteers but more are needed. Contact Jette for more details. <mailto:jetsorensen@gmail.com>

Limited parking in back of the shop is open for use. Park on the asphalt, off the alley concrete to avoid a parking citation. Please respect the space reserved for the shop instructor next to the paddle-tennis court.

**On behalf of the Shop Committee,  
Bruce Mensinger**

## UPCOMING SHOWS

### August 1 - 3: NIPOMO, CA

Orcutt Mineral Society, Santa Maria  
Nipomo High School  
525 North Thompson Avenue  
Hours: Fri/Sat 10 - 5; Sun 10 - 4  
Contact: Wes Lingerfelt, (805) 929-3788,  
Cell (805) 710-1983  
Email: [info@omsinc.org](mailto:info@omsinc.org)  
Website: [www.omsinc.org](http://www.omsinc.org)

### August 16 - 17: TEHACHAPI, CA

Tehachapi Valley Gem & Mineral Society  
St. Malachy's Catholic Church  
407 West E Street  
Hours: Sat 10 - 6; Sun 10 - 5  
Contact: Robert Papac, (661) 821-7103  
Email [getback@antelecom.net](mailto:getback@antelecom.net)  
Website: [www.tvgms.org](http://www.tvgms.org)

### August 23 - 24: SAN FRANCISCO, CA

San Francisco Gem & Mineral Society  
S. F. County Fair Building, Golden Gate Park  
9th Avenue & Lincoln Way  
Hours: Sat 10 - 6; Sun 10 - 5  
Contact: Ellen Nott  
Email: [ellen\\_nott@yahoo.com](mailto:ellen_nott@yahoo.com)  
Website: [www.sfgemshow.org](http://www.sfgemshow.org)

## ANNUAL CLUB PICNIC

**Saturday, September 20**

**LINDBERG PARK  
5041 RHODA WAY  
Culver City 90230  
10 am - 4 pm**

**Bring a side dish; salad, fruit or veggies,  
soft drink or water and  
Silent Auction donations..  
Burgers, dogs, buns, plates, utensils and  
condiments provided by the Club.**

The purpose of the CULVER CITY ROCK & MINERAL CLUB is to bring together persons interested in the earth sciences, to engage in research and study in this realm, and to assist members in the collection and preservation of rocks and minerals and in the study of lapidary and related arts.....<http://www.culvercityrocks.org>

### Officers for 2014

President - Brad Smith  
Vice President - Steve Dover  
Treasurer - Darrell Robb  
Recording Secretary - Ana Maria Guimaraes  
Corresponding Secretary - OPEN  
Education - Joe Porrazzo  
Federation Director - Ellen Moe  
Field trips - Co-Chairs Rocky and Cole Rhodes  
Historian - Bruce Mensinger  
Librarian - Bruce Mensinger  
Membership - Felice Ganz  
Minerals - Minda Moe  
Parliamentarian - Jette Sorensen  
Photography - Bruce Mensinger  
Programs - Charlene Aspray  
Publications - Lynne Lukert  
Co-Chairs Barbara Fier and Jan Ferguson  
Publicity: Janice Metz  
Show - Brad Smith (Acting Show Chair)  
Shop Committee (President, Vice President,  
Committee members)  
Social - Mary Ellen Shaffer  
Co-Chair Grace Sato  
Sunshine - Leda Rogers  
Trading Post - Steve Dover, Co-Chair Minda Moe  
Web Master - Jette Sorensen

### Board of Directors:

Ellen Moe (2014)  
Bruce Mensinger (2014)  
Rick Shaffer (2015)  
Jette Sorensen (2015)

### Where to contact us:

Phone: (310) 836-4611

Snail Mail address: P.O. Box 3324

Culver City, CA 90231

FaceBook: [www.facebook.com/CCRMC](http://www.facebook.com/CCRMC)

Twitter: [www.twitter.com/culvercityrocks](http://www.twitter.com/culvercityrocks)

Yahoo Group: <http://groups.yahoo.com/neo/groups/ccrmc/>

### The Nugget

The deadline for all submissions is generally the 15th of every month. All articles or notes without a byline are written by the Editor. Permission to copy is freely given as long as proper credit is noted.

The *Nugget* accepts paid advertisements by club members and non-members. The cost for an eighth of a page (approx. 2" high x 3.5" wide) is \$7 per insertion, payable in advance. Ad location is at the discretion of the Editor. Ad layouts, copy, or business cards must be received by the 10th of the month. Send materials directly to Lynne Lukert, Editor, 601 N. Bronson Ave., Los Angeles, CA 90004

### MEETING SCHEDULE

General Meetings are held the second Monday of every month\* at 7:30 p.m. in the Multi-Purpose Room in the Veterans Bldg., 4117 Overland Ave. Enter from the rear door. Guests are always welcome.

Executive Committee Meetings are held the second Monday of every month\* at 6:30 p.m. in the Multi-Purpose Room in the Veterans Bldg. Auditorium. All club members are welcome.

\*Meeting days occasionally change due to federal holidays or in July, because of the Fiesta Of Gems show.

### DUES & FEES

#### One time Initiation Fees:

Individuals	\$20.00
2 Persons/Same Address	\$25.00
Juniors	\$15.00

#### Yearly Membership Dues:

Individuals	\$25.00
2 Persons/Same Address	\$35.00
Juniors	\$10.00

(After July 1, dues are \$15.00, \$25.00 and \$5.00 respectively.)

### SHOP INFORMATION

The shop is open to all members in good standing over the age of 18 who sign an indemnification form. Junior members (13 - 18) must be accompanied by an adult. Instruction is available at all sessions. Practice slabs are available.

**Location:** 10866 Culver Blvd. in Culver City (behind the Boy Scout clubhouse and next to the paddle tennis courts)

**Shop Phone:** (310) 836-4611

#### Hours:

Tuesday	7 – 9:30 pm	- Bruce Mensinger
Wednesday	10 am – 2 pm	- Shop temporarily closed
Thursday	10 am – 2 pm	- Woody Shaffer
Saturday	Noon – 4 pm	- Lynne Lukert
Sunday	Noon – 4 pm	- Rick Shaffer

If no one shows, the shop may close early. If you plan to arrive more than a half hour after the opening time, phone the instructor



# the NUGGET

VOLUME 54  
ISSUE 8  
AUG 2014



CULVER CITY ROCK & MINERAL  
CLUB, INC.

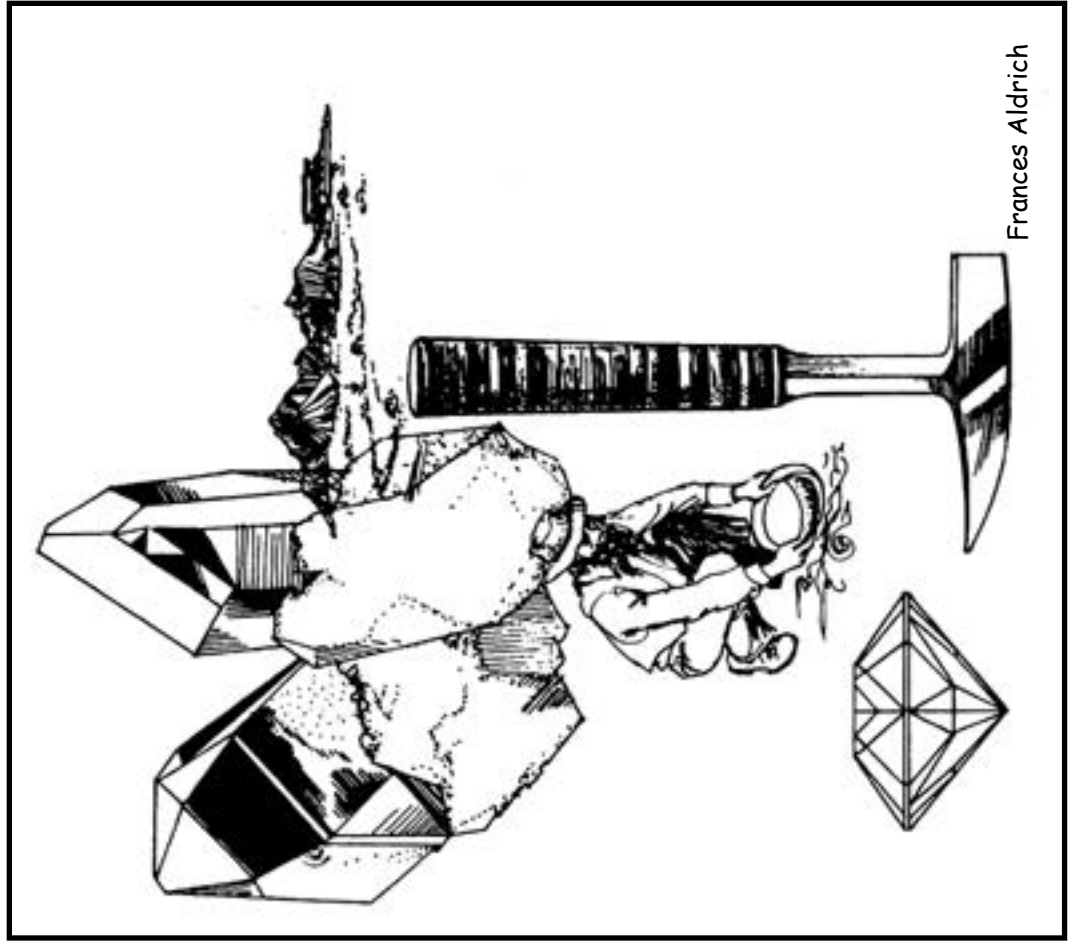
CULVER CITY, CALIFORNIA, USA

FIRST CLASS

CULVER CITY ROCK & MINERAL CLUB

Address Change Requested

The Nugget  
P.O. Box 3324  
Culver City, CA 90231



Frances Aldrich