

CULVER CITY ROCK AND MINERAL CLUB
P.O. BOX 3324 Culver City, CA 90231

SEPTEMBER 2015



Monday, September 14, 2015
6:30 pm Executive Meeting
7:30 pm Riveting as a Stone Setting



SEPTEMBER 14 PROGRAM

Melinda Alexander: Riveting as a Stone Setting

Join us for an evening with Melinda Alexander who will demonstrate and talk about stone setting. Melinda will demonstrate how to capture a cabochon stone with a simple method of riveting to create a beautifully elegant setting. The setting involves piercing, filing and riveting techniques.

Melinda received her Master of Arts degree from California State University at Los Angeles where she focused on Metals. From there she started working as a bench jeweler around Los Angeles. Melinda taught at GIA for 8 months before moving to San Francisco where she worked with a few jewelry stores, advancing from bench jeweler to diamond setter and head of shop.



Melinda has been teaching at Irvine Fine Arts Center for the past eight years and enjoys passing along her learned skills to new jewelers and artists. She has always tried to maintain a home workshop and truly enjoys that, and of course her two great boys.

Samples of riveted stone settings will be on display along with other work by Melinda. You can see many examples of her work at www.melindaalexander.com.

Charlene Aspray
Program Chair

PRESIDENT'S MESSAGE

Hello fellow Club Members and rock hounds.

It is always a little sad thinking that summer adventures are winding down and school, new jobs and other ventures are just around the corner. As the summer heat begins to wane, we were thinking a trip to the Mojave might be a fun way to see a unique part of the country and maybe discover some of the fabulous evaporative mineral specimens this region is famous for.

The Searles Lake Gem & Mineral Society of Trona has its annual show and many side field trips annually scheduled the second weekend in October. This year it is October 10-11th, Saturday 7:30AM to 5PM - Sunday 7:30AM to 4PM at the SLG&MS Lapidary and Show Building located at 13337 Main St. (corner of Main & Trona Rd.)

While not an official field trip of the CCRMC, this has been on our family's wish list for a long time and we hope that a good many club members and mineral enthusiasts can make the trip as well. We can discuss logistics more at the coming September meeting. Details of the various local field trips as well scheduled tour times of the Searles Valley Minerals' Plants can be found at this link. <http://www1.iwvisp.com/tronagemclub/FLYER.htm> (Follow the many other links for the full story of the Searles Valley and why this is one of only two places in the world where several of these evaporative minerals are found).

Darrell Robb
President

NEW LIFETIME MEMBER

If you haven't been a CCRMC member very long, the name "Lorraine Murphy" may not ring a bell, but when you hear "The Plant Lady," you know exactly who she is.

Many moons ago, Lorraine got a phone call the night before a Fiesta of Gems show. The show chairman at the time asked if she would be willing to arrange for plants for the show starting the next day. She



agreed and has been our "Plant Lady" ever since. For Lorraine, that job entails a lot more than selling plants two days a year. She has dedicated her entire garden to growing plants for our show. And

CCRMC is getting the benefits of her hard labor. Plant sales is consistently among the highest grossing revenue at Fiesta of Gems. At the show this past June, plant items brought in over \$1,000.

In recognition of Lorraine Murphy's hard work and dedication, the Club presented her with a Lifetime Membership at the August 15 picnic.

September Birthdays

Challis MacPherson	9/9	Chris Shi	9/21
Victor Rachootin	9/11	Liz Leshin	9/22
Darren Siegel	9/17	Franne Einberg	9/24
Barbara Hippensteel	9/19		

CONGRATULATIONS

SHOP NEWS

Shop schedule

Check our website, culvercityrocks.org, for scheduled open time or call the shop (310-836-4611) after the scheduled opening time to confirm that an instructor has arrived.

Equipment Availability

As of August 18 (when I was last at the shop before writing this report) all shop equipment was in good working order and ready for use.

Slab saw practice

The three large enclosed saws are used for reducing large irregular rocks to flat-faced slabs or geometric shapes. They utilize small industrial quality diamonds imbedded in a metal matrix to grind through rock. A great deal of heat is produced at the cutting edge which requires a continuous stream of light oil to prevent blade distortion and binding in the kerf with attendant uneven cutting, stalling or destruction of the blade, saw or rock. This topic is too complex to cover in the space of one Shop News report, so what follows is an introduction in outline form that will be elaborated upon in future months.

The following refers to the three large slab saws and attendant equipment and procedure.

- 1) Turn on the exhaust fan.
- 2) Clamp the rock to be cut in the saw's vise and adjust thickness of the cut.
- 3) Start the kerf (the slot that the blade makes in your rock as it cuts) manually by pressing the clamped rock against the blade with one hand and, with the other hand, rotate the blade toward you, NEVER away or back-and-forth. Continue until the kerf is about twice as deep as the width of the

Continued next page

blade, or more. Check kerf-to-blade alignment by moving the rock and vise toward you, then away. The blade should reenter the kerf. If the alignment is off, cutting will damage the blade. It will become dished like a musician's Cymbal. Move the rock into alignment using the hand crank on the vise to match the neutral blade position to the kerf then push the vise against the rock and engage the feed so the vise cannot slip back and out of the kerf. Close the lid and start the cut. After about a minute stop the saw and check that blade is in the kerf. Resume cutting.

4) Look at the translucent cover or window to confirm that oil is flowing and splashing; if not stop the saw immediately and correct the problem. Monitor the cutting and stop the saw if things are going wrong.

5) When the cut finishes turn off the saw, wait a few minutes to let the oil mist settle; then open the cover. Disengage the feed and pull the carriage back to the starting position.

6) If additional cuts are needed adjust the vise, check that the rock is still firmly held in the vise or remove the rock and clamp it again in the new position, then repeat steps 3 thru 5.

7) When done, remove your rock from the vise and the off-cut or slabs from the saw.

8) Clean-up the saw so it is ready for the next user.

9) Clean-up the oil on your stones and slabs using the absorbent diatomaceous earth in the blue container below the exhaust fan. Finish cleaning oil and diatomaceous earth in the sink using a brush, dish soap and water. Waste particles caught in the drain screen must be dumped in the trash, NEVER washed down the drain.

Limited parking in back of the shop is open for use. Park on the asphalt, off the alley concrete to avoid a parking citation. Please respect the space reserved for

the shop instructor next to the paddle-tennis court.

On behalf of the Shop Committee,
Bruce Mensinger

BENCH TIPS

SMOOTHING EARWIRES

Any time you make your own earwires, the hardest part for me is to sand and polish the end that's inserted into the ear. Any sharp edge there is no fun. I've tried using sanding sticks, cup burs, and silicone polishing wheels. I've tried buffing on a Zam wheel, and I've tried spinning the wire in the Foredom to polish the tip. While all of these techniques do the job, none are very easy, and none are as fast as I'd like.



Then it occurred to me - I could melt the wire smooth. One quick touch in the flame of the propane/oxygen Little Torch does the trick - not enough to

form a bead on the wire but just enough to round off the tip. I find it's worth practicing the maneuver a couple times on some scrap wire before trying it on completed earrings.

BALL BURS

I use ball burs quite a bit for carving and for cleaning up bits of solder that need to be removed. The ball shape seems to be more controllable than other cutting burs. They're less apt to grab and walk over your piece.

As to sizes, I've found that 8 mm is a very useful size for carving while a half mm or smaller at high speed works great for signing your name on the back of your work.



Excerpted from Bench Tips for Jewelry Making: 101 Useful Tips

MINERAL REPORT

It's Native!

Native copper, due to its long historic use, is rarely mineable in an economically viable fashion. Today, native copper samples are prized as specimens for collections. Well-crystallized specimens are especially rare, and are highly sought. Native copper is most commonly found in volcanic basalt rocks, near the level of contact with the surrounding sedimentary rocks. It can also be found near hydrothermal deposits and in the oxidation zone of sulfide deposits.

Other sources of copper are usually purified for use in wiring, tubing, electrical components, and many other goods. Mankind has utilized copper in ornamental objects and cooking utensils since roughly 4200 BC, according to some sources. Copper conducts heat very well, and is the second-best conductor of electricity (after silver). Brass is an alloy of copper and zinc, and bronze is an alloy of copper and tin.

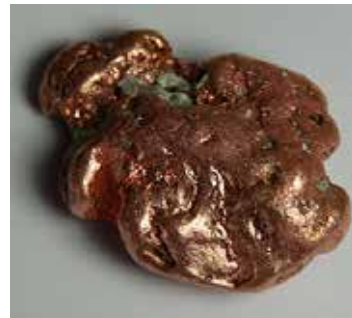
Pure copper is very soft, coming in around 2.5-3 on the Mohs hardness scale. Its normal color is copper-red, unsurprisingly, but it tarnishes to green or black over time. Copper is one of only four elemental metals with a natural color that is not gray or silver – the others are caesium, gold, and osmium. It has a measured density of 8.94. Native copper is commonly associated with calcite, cuprite, malachite, azurite, silver, and quartz.



Copper is the 29th element on the periodic table, and uses the symbol Cu. Its chemical symbol comes from its Latin name, cuprum.

Elemental copper lends color to many minerals. It is also an essential trace dietary mineral, and is mostly

found in the human body in the liver, muscle, and bones. Copper compounds can be used as preservatives, fungicides, or as bacteriostatic substances (which prevent bacteria from reproducing). Folklore says that copper bracelets can be used to relieve arthritis pain, though there is no known benefit according to medical science.



During the Roman Era, the primary mining location for copper was Cyprus, which gave the metal its name. In the United States, notable copper localities occur in Michigan, Arizona, and New Jersey. Worldwide, there are famous localities in Australia, China, Namibia, and England.

Minda Moe
Mineral Chair

MINUTES of the EXECUTIVE MEETING AUGUST 10, 2015

- Those present: Steve Dover, Fran Einberg, Felice Ganz, Ana Maria Guimaraes, Bruce Mensinger, Ellen Moe, Minda Moe, Darrell Robb, Leda Rogers, Grace Sato, Jette Sorensen and Joyce Watanabe.
- The meeting was called to order at 6:43pm by President Darrell Robb.
- The July Executive Meeting minutes published in the August Nugget were approved as read.
- Treasurer Report: Fran Einberg reported the results of the Fiesta of Gems. In addition, she informed she had researched whether the Club could advertise lectures and demonstrations and whether a fee could be charged for them. According to the IRS, the Club could do that without impacting its tax-exempt status. Ms. Einberg also explained that independent contractors are not covered by the Club's insurance policy. In all Club sanctioned events that are offered as lectures and demonstrations, the insurance policy would cover the members as

Continued next page

demonstrators or lecturers – such as when one of the Shop Committee members demonstrates how to use the saw to members and guest. A motion was approved to establish all demonstrations and lectures as Club sanctioned events, and advertised as such in all Club communications. Ms. Einberg agreed to review the wording of Club lectures advertising communications for proper terminology. She also informed the Boy Scouts’ insurance does not cover fire inside the Boy Scouts’ House, but the Fire Department allows fire outside.

- Membership Report: Felice Ganz reported the Club had approximately 150 members. She indicated she and Jette Sorensen were developing a roster.
- Librarian Report: Bruce Mensinger reported he had been purchasing books from Goodwill for the Club’s library.
- Social Report: Grace Sato discussed the food she planned on purchasing for the Club picnic. Bruce Mensinger committed to bringing pens and paper for the picnic silent auction, while Steve Dover was to bring donated items from the shop to the park.
- New Business: Darrell Robb reported that for five dates in 2016, the Club meetings would not be at the multi-purpose room - four would be in the Rotunda and one at the Senior Center.

The meeting adjourned at 7:21pm

Submitted by Ana Maria Guimaraes
Recording Secretary

MINUTES of the GENERAL MEETING AUGUST 10, 2015

The meeting was called to order at 7:41pm, the Pledge of Allegiance was made and a quorum was established.

- Six guests and three new members were introduced.
- The July General Meeting minutes published in

the August Nugget were approved as read.

- Darrell Robb reported the results of the Fiesta of Gems.
- Mr. Robb reminded members about the Club picnic and silent auction on August 15. Bruce Mensinger explained how the silent auction worked.
- Mr. Robb announced Ken Rogers and the Club would be featured on the TV show Storage Wars, to discuss a lapidary piece of equipment found in a storage room; this was an opportunity to showcase the Club and fulfill its education mandate.
- Steve Dover announced that guest speakers Larry Hoskinson and Leslie Neff had donated an opal for the raffle, which would take place during the break.
- Jette Sorensen informed the Club officers had determined that lectures and demonstrations could be sanctioned by the Club without compromising the Club’s tax-exempt status; she also announced the upcoming lectures.

The meeting adjourned at 7:56pm; a break was held for refreshments and a raffle, followed by the August Program.

Submitted by Ana Maria Guimaraes
Recording Secretary

PROGRAM REPORT

Jette Sorensen introduced Larry Hoskinson and Leslie Neff, who have been travelling throughout Australia to obtain opals for many years. They talked about their recent trip to Yowah, Queensland, providing interesting facts on the region’s fauna, landscape and residents.

They explained how to travel through the region, where to find opals and how to extract them. Their presentation was illustrated with vivid photos of the roads through which they travelled, places where they stayed, mine fields they visited and opal specimens they collected.



ANNUAL PICNIC 8/15



The purpose of the CULVER CITY ROCK & MINERAL CLUB is to bring together persons interested in the earth sciences, to engage in research and study in this realm, and to assist members in the collection and preservation of rocks and minerals and in the study of lapidary and related arts.....<http://www.culvercityrocks.org>

Elected Officers for 2015

President - Darrell Robb
Vice President - Jette Sorensen
Treasurer - Franne Einberg
Recording Secretary - Ana Maria Guimaraes
Corresponding Secretary - Jan Ferguson
Education - OPEN
Historian - Bruce Mensinger
Parliamentarian - Ellen Moe

Committee Chairs:

Federation Director - Rick Shaffer
Field Trips - Open
Librarian - Bruce Mensinger
Membership - Felice Ganz
Minerals - Minda Moe
Photography - Bruce Mensinger
Programs - Charlene Aspray
Publications - Co-Chairs Barbara Fier,
Jan Ferguson, Jette Sorensen
Publicity - Janice Metz
Show - Brad Smith
Co-Chair - Hellena Jones-Elbling
Shop Committee - President,
Vice President, Instructors
Social - Grace Sato
Co-Chair - Joyce Watanabe
Sunshine - Leda Rogers
Trading Post - Steve Dover
Web Master - Jette Sorensen

Board of Directors:

(2015) Rick Shaffer - Jette Sorensen
(2016) Steve Dover - Leda Rogers
(2017) Bruce Mensinger - Ana Maria Guimaraes

Contact Us:

Phone: (310) 836-4611
Address: P.O. Box 3324, Culver City, CA 90231
FaceBook: www.facebook.com/CCRMC
Twitter: www.twitter.com/culvercityrocks
Yahoo: <http://groups.yahoo.com/neo/groups/ccrmc/info>

MEETING SCHEDULE

General Meetings are held the second Monday of every month* at 7:30 p.m. in the Multi-Purpose Room in the Veterans Bldg., 4117 Overland Ave. Enter from the rear door. Guests are always welcome.

Executive Committee Meetings are held the second Monday of every month* at 6:30 p.m. in the Multi-Purpose Room in the Veterans Bldg. Auditorium. All club members are welcome.

*Meeting days occasionally change due to federal holidays or to accommodate the Fiesta Of Gems Show.

DUES & FEES

One time Initiation Fees:

Individuals	\$20.00
2 Persons/Same Address	\$35.00
Juniors	\$15.00

Yearly Membership Dues:

Individuals	\$25.00
2 Persons/Same Address	\$35.00
Juniors	\$10.00

(After July 1, dues are \$15.00, \$25.00 and \$5.00 respectively.)

SHOP INFORMATION

The shop is open to all members in good standing over the age of 18 who sign an indemnification form. Junior members (13 - 18) must be accompanied by an adult. Instruction is available at all sessions. Practice slabs are available.

Location: 10866 Culver Blvd. in Culver City (behind the Boy Scout clubhouse and next to the paddle tennis courts)

Shop Phone: (310) 836-4611

Hours:

Tuesday	7 – 9:30 pm - Bruce Mensinger
Wednesday	10 am – 2 pm - By appointment, see http://culvercityrocks.org/lapshop.htm
Thursday	10 am – 2 pm - Various instructors
Saturday	Noon – 4 pm - Lynne Lukert
Sunday	Noon – 4 pm - Rick Shaffer

If no one shows, the shop may close early. If you plan to arrive more than a half hour after the opening time, phone the instructor at (310) 836-4611

The Nugget

The deadline for submissions is the 15th of every month. All articles or notes without a byline are written by the Editor. Permission to copy is freely given as long as proper credit is noted.

The Nugget accepts paid advertisements. The cost for an eighth of a page (approx. 2" high x 3.5" wide) is \$7 per insertion, payable in advance. Ad location is at the discretion of the Editor. Ad layouts, copy, or business cards must be received by the 10th of the month. Send materials to Culver City Rock and Mineral Club, P.O. Box 3324, Culver City, CA 90231, Attention: Editor.



the NUGGET

VOLUME 56

ISSUE 9

SEPT 2015

CULVER CITY ROCK & MINERAL

CLUB, INC.

CULVER CITY, CALIFORNIA, USA

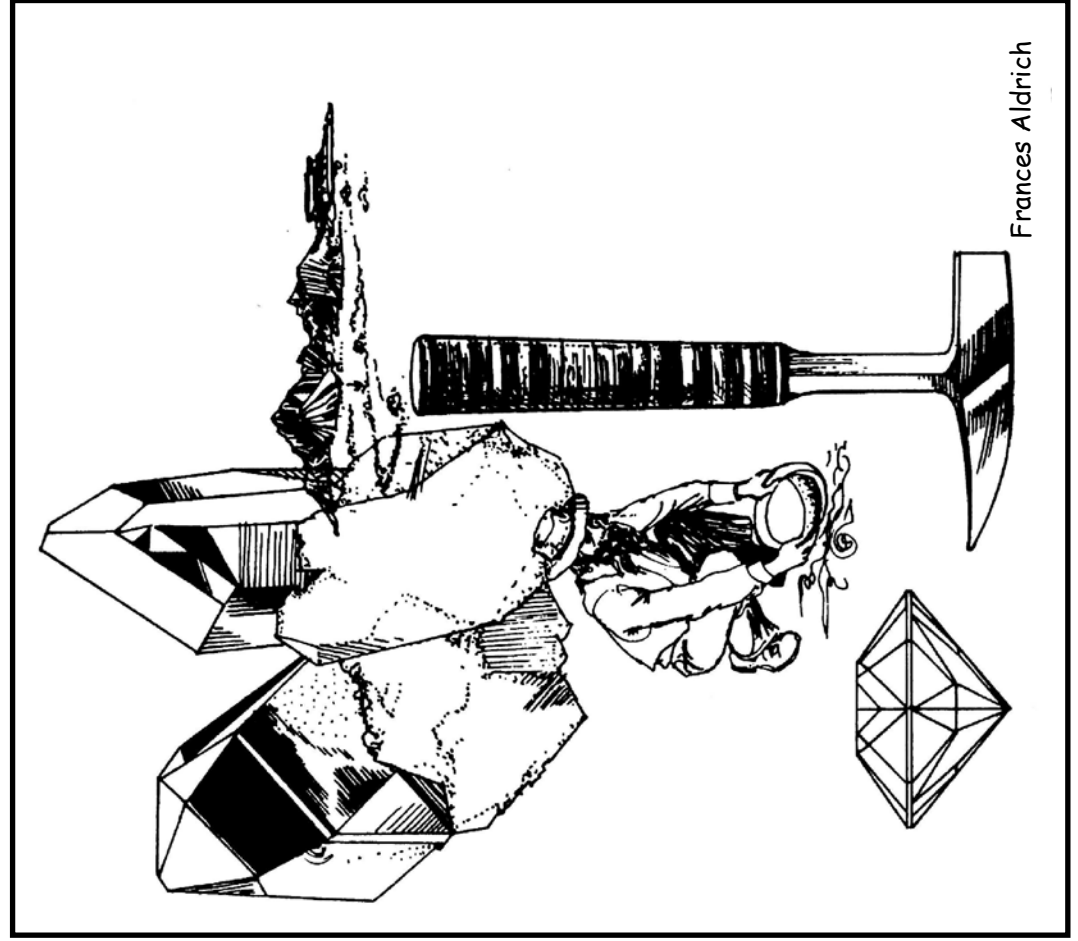


FIRST CLASS

CULVER CITY ROCK & MINERAL CLUB

**The Nugget
P.O. Box 3324
Culver City, CA 90231**

Address Change Requested



Frances Aldrich