

CULVER CITY ROCK AND MINERAL CLUB
P.O. BOX 3324 Culver City, CA 90231



SEPTEMBER 2016

Monday, September 12, 2016

6:30 pm Executive Meeting

7:30 pm Ethiopian Opals and Green Amber

Culver City Veterans Memorial Complex, 4117 Overland Avenue, Rotunda



Visitors Welcome

**September 12 PROGRAM
Ethiopian Opals and Amber**

Presented by Gabriel "Gaby" Mosesson, of Ethiopia Imports.

Gaby and his family just returned from a month in Ethiopia, and he will have some wonderful, new photos, videos, and gemstones to show us.

Gabriel's two-part visual presentation will be augmented with many actual examples of his gemstones. (Plus, he'll have rough and cut stones for sale).

Part 1: Ethiopian Opals

The Opal Mines in Ethiopia · Intro to Ethiopian Opal; Characteristics, qualities, types (Wello, Shewa) · Cutting Wello Opals; Various cutting methods · Opal Stabilization Process

Part 2: Ethiopian Amber

Intro to Ethiopian Amber · Green Amber · Amber with Insect Inclusions

Gabriel Mosesson is an importer of exotic gemstones, especially Wello Opals, from Ethiopia. Plus, he is a respected gem cutter and carver, and a fine jewelry designer (www.ZoZoDesigns.com).



Wello Opal

Gabriel exhibits his gemstones and his work at various Gem and Jewelry Shows in California, and around the country, where he displays

his wide collection of rough and polished opals which include rare specimens and museum grade collector's pieces.

Gaby's company, www.ethiopiaimports.com, specializes in Ethiopian Wello (Welo) opals, which were discovered in 2007 in the Welo Province of Ethiopia. Since their discovery, Welo opals have been captivating the gem world and have risen to the top of the list of precious gems due to their beauty, color diversity, and unique qualities.

Per Ethiopian Imports: "We provide the finest Welo opals through our dedicated workshop and distribution centers in Addis Ababa, Ethiopia and Los Angeles, California.



Insect inclusion in Amber

We have acquired a solid reputation for supplying gem cutters and jewelers with quality opals worldwide. Our collection of opals includes Hand Carved Opals, Rare Investment Grade Opals, Opal Specimens, and



a growing collection of unique handmade one of a kind Ethiopian Opal Jewelry.

Gaby has added the newly discovered Ethiopian Green Amber to his inventory. This new discovery is said to be the oldest amber ever found, and it has marvelous qualities. Some of this amber has unique insect, and other, inclusions and it facets beautifully."

PRESIDENT'S MESSAGE

Hello fellow Club Members and rock hounds.

I hope everyone had time to see some of the magic of the Olympic Games from Rio this past month. What a great showcase for all the world's best athletes to meet and compete outside of the turmoil of political strife and seemingly endless war elsewhere on our tiny planet. Kudos to Brazil for their gracious hosting of all the events, especially given the many naysayers prior to the opening ceremonies. It may remind us we are four years older than the last Olympiad but all the better able to appreciate the great performances of the best of the best. Mr. Phelps, Simone, Usain Bolt and so many others—WOW! We salute you!

There is a little tinge of sadness to see the summer almost over but lots of autumn adventures await. Our California Federation of Mineral Societies committee chair, Rick Shaffer reminds us that the annual CFMS sponsored show this year is September 16-18. I am looking forward to visiting for at least one day up in Placerville, El Dorado County.

Our family missed the annual show at Searles Lake last year, as it remains high on the bucket list as one of those events we hear from all rock hounds that you have to see at least once in your life. We are studying up on the many evaporative minerals found throughout the region and are planning to attend as many of the side field trips the show offers the weekend of October 8 and 9. We hope to see many club members and friends in Trona this year. Details of the various local field trips as well as scheduled tour times of the Searles Valley Minerals' Plants can be found at <http://www1.iwvisp.com/tronagemclub/FLYER.htm> (Follow the many other links for the full story of the Searles Valley and why this is one of only two places in the world where several of these evaporative minerals are found).

I hope everyone had a great summer-- see you all at the next club meeting September 12 in the Rotunda at the Culver City Veterans Memorial Auditorium.

Darrell Robb
Club President

MINERAL REPORT

Galena at a glance

Galena is sometimes also called lead glance. Its formula is PbS , and it is one of the most abundant sulfide minerals. As lead is a major component of galena, care should be taken when grinding or cutting samples. Undisturbed samples are safe to handle, as the lead is bound to crystal structure and is not a major threat. Altaire is the extreme member of a solid solution series with galena, where all of the sulfur has been replaced by tellurite. Weathering and oxidation can cause galena's alteration to anglesite or cerussite, which are respectively lead sulfate and lead carbonate.



Photo courtesy of Rob Lavinsky, iRocks.com

It crystallizes in the cubic crystal system, with perfect cleavage in one direction and a parting cleavage. Its color is lead gray to silvery. It exhibits subconchoidal fracture and has brittle tenacity. On the Mohs scale of hardness, it comes in as a 2.5. Its streak is lead gray. Galena is most often associated with sphalerite, calcite, and fluorite.

Galena is an important source of lead and silver. It has a low melting point, at 2,037 °F/1,114 °C, so it is relatively easy to smelt. It has been the main ore of lead for decades, and was used in Ancient Egypt as

continued on page 3

MINERAL REPORT continued

a cosmetic. Some deposits of galena are 1-2% silver, with occasional solid state silver solutions within the galena itself. It is economically advantageous to separate the silver from the galena, so argentiferous galena deposits are quite valuable.

As galena is a natural semiconductor, it was used in early wireless communication systems. It was popular in the home radio hobby in Europe during the 1930s. Galena has been largely replaced in modern systems by more reliable devices.

There are many important galena deposits in Europe, including sites in Germany, England, and Bulgaria. Within the United States, the Lead Belt of southeastern Missouri, the tri-state area of Missouri, Kansas, and Oklahoma, and the Driftless Area of Illinois, Iowa, and Wisconsin have historically been important galena deposits. The town of Galena, Illinois takes its name from the mineral, which was an economic mainstay in the early history of the Driftless Area; Galena, Kansas is its equivalent in the tri-state area. The silver mining regions of Colorado, Idaho, Utah, and Montana are also notable production areas for galena. Galena is the official state mineral of Missouri and Wisconsin.

Minda Moe
Mineral Chair

SHOP NEWS

Shop schedule

Check our website www.culvercityrocks.org for scheduled open time and last minute information, or call the shop (310-836-4611) after the scheduled opening time to confirm that an instructor has arrived.

A month of breakdowns

This past month has been one of frustrating equipment breakdowns. We started out with the small flat lap (less than six months old) having water leak inside the electric motor area. I disassembled the machine and dried the components, then tested the unit and found that it was now working. I reassembled everything and tested the unit again; everything worked normally. The next day I tested it again and all was well, or so I thought. Little did I suspect that

inside, the motor was still wet. In fact, the leak that stopped the motor must have been occurring from the beginning of our use of the machine.

After putting the machine back in service it soon failed again. This time I disassembled the motor too and found that it was so corroded and rusty inside that some of the more delicate parts were binding. The rust had blocked the commutator and brushes from making contact. The motor warranty was already expired.

So, what to do? We had another similar machine (a donation), albeit with a smaller diameter lap platter and the older tiny clog prone waste water drain. The good news is that the rest is identical to the newer machine we have; we can use our larger diameter lap disks. I am reworking this machine to have better drainage and better protection against water entering the motor area.

The other main breakdown is an ongoing problem with the 18-inch rock saw. I found several areas needed work or adjustment. I have fixed most of them already. The most unusual of the bunch was a looseness of the belt that the motor drives to turn the shaft that turns the blade and advances the carriage. The usual problem is loose pulleys. This time it was the looseness of the entire support and tensioning mechanism itself. Now the remaining problem is the grooving the saw blade leaves on the cut faces of the slab. The solution may be a replacement blade from a different manufacturer.



More parking in back of the shop is open for use. Park on the asphalt, off the alley concrete to avoid a parking citation. Please respect the space reserved for the shop instructor next to the paddle-tennis court.

On behalf of the Shop Committee
Bruce Mensinger

FEDERATION REPORT

Conservation and Legislation:

I realize the last thing anybody wants to do is to read the Federal Register, comprehend legislation like the Wilderness Act of 1964, or try to figure out the actions of Federal Agencies like the U.S. Forest Service or the Bureau of Land Management. Well if we want to keep our collecting areas open for today and the future, we need to speak up now and be heard! I want to commend the work of three Federations for their work behind the scenes on our behalf.

First, the California Federation (in particular, John Martin, our Conservation and Legislation Chair) for getting the word out on terms like wilderness areas, national monuments, and environmental study areas and how they affect and limit our ability to collect minerals and fossils.

Second, the Northwest Federation (in particular, Hidemi Kira, NW President) for sending letters to the Bureau of Land Management on the sage-grouse issue, which could significantly affect a large area in the Northwest where many important rockhounding sites are included.

Third, the Rocky Mountain Federation (in particular, Mike Nelson, Chair of the Public Lands Access Committee representing each state within the Rocky Mountain Federation) for sharing information on Federal land collecting.

You may think their effort is a pacific coast, Rockies, plains, and midwest “thing”. Actually, it is an AFMS “thing”. We are all going to have to be part of the solution if we want to continue to collect today and in the future. We need people to speak up and voice their opinion when public comments are asked for.

I hope we can spend some time on this issue at the next AFMS Convention in Albany, OR. It is that important and the time to act is now. Many of us joined clubs for the opportunity to collect minerals and fossils. Let’s not allow collecting trips be taken away from us

Matt Charsky, AFMS President
(Reprinted from the AFMS June 2016 Newsletter)

PICNIC and SILENT AUCTION August 13



Eating, looking, checking



Writing in bids



Steve Dover calling “Time”



Some had already left, others not yet arrived

September/October WORKSHOPS

To make a reservation, you must be a member of CCRMC. Email workshops@culvercityrocks.org and you will receive a reply with instructions on how to prepay to confirm your reservation.

HANDS-ON INTARSIA

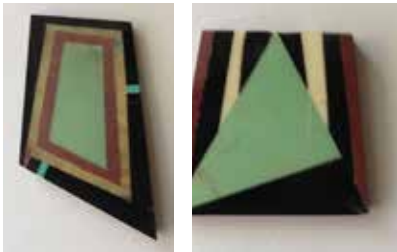
September 18 - 9 am - Noon

Instructor: Anthony Chavez

At FOCCSH (scout house)

Limit 5 participants - *CCRMC members only*

Fee: \$25 including all materials & supplies



A natural progression following last month's successful Intarsia demonstration - hands-on! Create your own intarsia pendant from start to finish. Attendance at the August demo is not a requirement.

BEGINNING LAPIDARY - Make a Cabochon

September 4 - FULL

September 18 - FULL

October 9 - 9 am - Noon

October 23 - 9 am - Noon

Instructor: Jette Sorensen

At CCRMC Shop

Limited to 3 participants - *CCRMC members only*

Fee: \$20 including materials

You are welcome to stay beyond noon for regular open hours, however you will need to pay the posted Shop fees.

The popular "Beginning Lapidary" workshops con-



tinue to be offered. Learn the steps necessary to take

a slab through the process of sawing, grinding, and polishing to create your own beautiful oval cabochon using machines in the Shop.

These workshops are limited to 3 participants to insure each participant's access to equipment and individual attention.

PROGRAM REPORT August 8

Ken Rogers introduced Dick and Mary Pat Weber, who discussed septarian concretions from Utah, which they began collecting in the seventies.

Mr. Weber explained these are spherical concretions found in calcite. They comprise calcareous mudstone on the outside and calcite inside, with aragonite in between, partitioned from the mudstone. Some concretions are completely filled out, while some are hollow. Mr. Weber indicated septarian concretions could be found where the states of Utah, Arizona and Nevada come together, right outside the Zion National Park (cities of Orderville, Glendale, Mt. Carmel).

The concretions were first found in the 1890's in the creek bed; now they are mined in open pits about six feet deep. Mr. Weber illustrated his presentation with several images of interesting specimens and of the geology of the region. He explained that, to find the concretions, one must identify the ash marker bed and look for the septarians about ten to twelve feet below it. He advised purchasing septarians in chunks, so that the interior is exposed, and indicated they are easy to polish.

The Webers displayed several specimens from their collection after their presentation.

Submitted by Ana Maria S. Guimaraes

MINUTES of the EXECUTIVE MEETING August 8

Those present: Steve Dover, Franne Einberg, Felice Ganz, Ana Maria Guimaraes, Hellena Jones-Elbling, Bruce Mensinger, Janice Metz, Ken Rogers, Leda Rogers, Darrell Robb, Grace Sato, Mary Ellen Shaffer, Rick Shaffer, Brad Smith, Jette Sorensen.

Continued on page 6

The Meeting was called to order at 6:41 pm by president Darrell Robb.

- The July executive meeting meeting minutes published in the August Nugget was approved as read; Franne Einberg abstained from voting.
- Brad Smith indicated the Club could reach 200 members this year. A discussion followed as to whether non members could attend the summer picnic and participate in the silent auction.
- Franne Einberg presented the Club finances for the first six months of the year, excluding the show records. She indicated she would present the show records at the September meeting. It was noted the phone bill had been particularly high recently; it was determined the Club should identify a phone service plan better suited for its current needs.
- Darrell Robb indicated Hellena Jones-Elbling had washed some of the table cloths used at the show and had suggested all of the table cloths be taken to the cleaners. A discussion followed about purchasing additional fire-proof table cloths; Brad Smith committed to researching prices.
- Brad Smith indicated the bylaws document needed to be updated and suggested identifying a volunteer among the Club members, who is knowledgeable about document formatting.
- Brad Smith reminded a nomination committee for the 2017 Officers elections should be established soon. He emphasized it was important to get more members involved in the various chairs to ensure the Club had qualified members to eventually become part of the Board of Directors as well as President.
- Bruce Mensinger informed several items had been gradually disappearing from the library and recommended locking the collection up. He indicated recent donations had not been catalogued yet. A Shop Committee meeting was scheduled for the following week.
- Steve Dover suggested consulting with member Susan Beveridge as to whether there could be legal challenges to issues raised by Sid Kronenthal's executrix regarding denying the original bequest due to the Club being a 501(c)(4) corporation rather than a 501(c)(3).
- Ken Rogers informed he had not yet identified a

speaker for the October program.

- Janice Metz asked whether a date had been set for next year's Fiesta of Gems, as she would like to start publicity early. A discussion followed about moving the show date to July to improve attendance and avoid conflict with concurrent events.
- Janice Metz advised that the Yahoo Group for field trips had been discontinued and its members were now on Facebook. She indicated she would begin advertising the Club monthly meetings on that page.

The meeting adjourned at 7:26 pm.

Submitted by Ana Maria S. Guimaraes
Recording Secretary

MINUTES of the GENERAL MEETING August 8

The meeting was called to order at 7:45 pm by president Darrell Robb.

The Pledge of Allegiance was made and quorum was established.

- The July general meeting minutes published in the August Nugget were approved as read.
- Darrell Robb reminded members that the Club's annual picnic would take place on 8/13/16 at the Lindberg Park. He asked members to bring a side dish or dessert, as well as items for the silent auction.
- Darrell Robb reminded members to return to the library items checked out, as several items are missing.
- Darrell Robb informed Anthony Chavez would give a demonstration on intarsia, or inlay on 8/14/16; those interested were to sign up with Jette Sorensen.
- Brad Smith informed the Club roster was available to members.
- Darrell Robb informed the Nomination Committee in charge of nominating candidates for the 2017 officer slate would be announced within a month. He urged members to step up and get involved in the various chairs for next year.
- Nine guests were introduced.
- Ken Rogers informed he had not yet secured a speaker for the October program and asked mem-

Continued on page 7

GENERAL MEETING MINUTES continued
 bers for suggestions on speakers and themes of interest. He announced this month's speakers, the Webers, had graciously donated a septarian concretion specimen for the picnic silent auction. He added the Webers had also donated a large quantity of petrified wood specimens and thanked them on behalf of the Club.

The meeting was adjourned 8:07 pm.

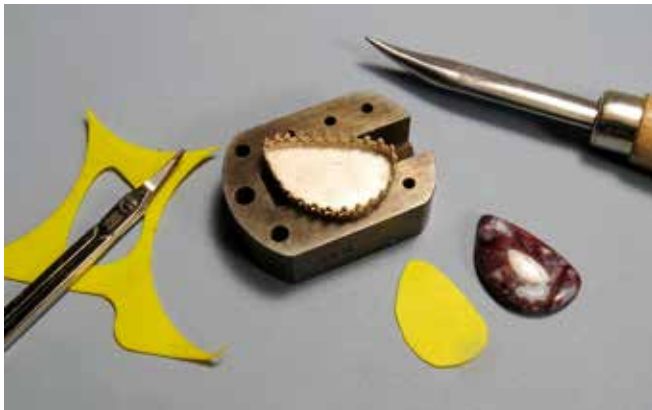
Submitted by Ana Maria S. Guimaraes
 Recording Secretary

BENCH TIPS

RAISING A CABOCHON

When a cabochon sits too low in a bezel, the bezel hides a lot of the stone. The solution is to either sand down the bezel height or boost up the stone. If you're going to raise it up, question is what is the best material to use?

I was taught to use fine sawdust but now think that might be a problem when used in rings. I reason that rings will frequently get wet, which would cause the sawdust to swell in size and push the stone against the bezel. Then when the sawdust dries out, the stone would be a little loose.



In any case, I now prefer pieces of plastic sheet to boost up my stones. Pieces are readily available from product packaging or from old credit cards. I just cut a piece to loosely fit the bezel and drop in the stone (with some dental floss) to check it's height.

TRANSPARENT CAB

When bezel setting a transparent cabochon in silver, I usually cut out the back of the bezel to allow background light to show off the colors and patterns in the

stone. If this is not possible or appropriate, I worry that the silver bezel will tarnish under the stone and will ruin its brilliance. What to do?

My solution is one extra step before setting the stone. I place a piece of thin silver Mylar plastic under the stone to act as a mirror that will never tarnish. Mylar is readily available in craft and gift wrap stores, or in



Mylar

a pinch from a party balloon supplier. You may even want to experiment with using colored or patterned Mylar (i.e. diffraction pattern) under some stones.

Excerpted from "Bench Tips for Jewelry Makers" by Brad Smith

WELCOME NEW MEMBERS



Stella Green • Ashley Huitron • Renee Kraus
 Kaoru Rogers • Peter Stankavich • Sencee Tagami

AUGUST BIRTHDAYS

- Victor Rachootin 9/11
- Sensee Tagami 9/18
- Chris Shi 9/21
- Liz Leshin 9/22
- Franne Einberg 9/24
- Jacob Tillman 9/29
- Kieran Fletcher 9/29



SEPTEMBER/OCTOBER SHOWS

September 16 - 18: Placerville, CA

77th CFMS Show & Convention "Strike Gold"

Hosted by El Dorado County Mineral & Gem Society

El Dorado County Fairgrounds

100 Placerville Drive

Hours: Fri - Sun 10 - 5 daily

Contact: Barbara Terrill, 530 676-2375

Email: info@rockandgemshow.org

Web Site: www.cfms2016show.com

Lodging List on web site.

September 17 - 18: CHICO, CA
Feather River Lapidary & Mineral Society, Oroville
Silver Dollar Fairgrounds
2357 Fair Street
Hours: Sat 9:30 - 5; Sun 9:30 - 4
John Scott, (530) 321-6331
Email: jweazel@sbcglobal.net
Website: www.featherriverrocks.org

September 24 - 25: LODI, CA
Stockton Lapidary & Mineral Club
Lodi Grape & Harvest Festival Grounds
413 East Lockford Street
Hours: 10 - 5 daily
Contact: Jerold Kyle, (209) 368-9411
Email: jeroldkyle@yahoo.com
Website: www.stocktonlapidary.com

September 24 - 25: MONTEREY, CA
Carmel Valley Gem & Mineral Society
Monterey Fairgrounds
2004 Fairgrounds Road
Hours: Sat 10 - 6; Sun 10 - 5
Contact: Janis Rovetti, (831) 372-1311
Email: janis12@sbcglobal.net
Website: www.cvgms.org

September 24 - 25: REDWOOD CITY, CA
Sequoia Gem & Mineral Society
Community Activities Building
1400 Roosevelt Avenue

Hours: 10 - 5 daily
Contact: Catherine Fraser, 650-954-6020
Email: catherinef@fraseradv.com
Website: www.sequoiagemandmineralsociety.org

September 24 - 25: SANTA ROSA, CA
Santa Rosa Mineral & Gem Society
Wells Fargo Center for the Art
50 Mark West Springs Road
Hours: Sat 10 - 6; Sun 10 - 5
Contact: Jolene Coon
Website: www.srmgs.org

October 1 - 2: BORON, CA
Mojave Mineralogical Society
Boron Recreation Park
26998 John Street
Hours: Sat 9 - 5; Sun 9 - 4
Contact: Bruce Davies, (760) 338-8829
Email: daviesb@yahoo.com

October 1 - 2: VISTA, CA
Vista Gem & Mineral Society
Antique Gas & Steam Engine Museum
2040 North Santa Fe Avenue
Hours: Sat 10 - 5; Sun 10 - 4
Contact: Ray Pearce, (760) 726-7570
Email: raysrocks@cox.net

October 8 - 9: ANDERSON, CA
Shasta Gem & Mineral Society
Shasta District Fairgrounds
1890 Briggs Street
Hours: Sat. 9 - 5; Sun. 10 - 4
Steve Puderbaugh, 530-604-2951
Email: kelly13@shasta.com
Show Website: www.shastagemandmineral.com

October 8 - 9: GRASS VALLEY, CA
Nevada County Gem & Mineral Society
Nevada County Fairgrounds (Main Building)
11228 McCourtney Road
Hours: 10 - 5 daily
Contact: Todd Lawson, (530) 305-9212
Email: webmaster@ncgms.org
Website: www.ncgms.org

October 8 - 9: TRONA, CA
Searles Lake Gem & Mineral Society
SLGM Show Building
13337 Main Street
Hours: Sat 7 - 5; Sun 7 - 4
Jim and Bonnie Fairchild, (760) 372-5356
Email: slgms@iwvisp.com
Website: www1.iwvisp.com/tronagemclub

The purpose of the CULVER CITY ROCK & MINERAL CLUB is to bring together persons interested in the earth sciences, to engage in research and study in this realm, and to assist members in the collection and preservation of rocks and minerals and in the study of lapidary and related arts.....www.culvercityrocks.org

Elected Officers for 2016

President - Darrell Robb
Vice President - Steve Dover
Treasurer - Franne Einberg
Recording Secretary - Ana Maria Guimaraes
Corresponding Secretary - Jan Ferguson
Historian - Bruce Mensinger
Parliamentarian - Woody Shaffer

Committee Chairs:

Education - Manon Tree
Federation Director - Rick Shaffer
Field Trips - Open
Librarian - Bruce Mensinger
Membership - Brad Smith
Co-Chair - Leda Rogers
Minerals - Minda Moe
Photography - Bruce Mensinger
Programs - Ken Rogers
Co-Chair - Steve Dover
Publications - Co-Chairs Barbara Fier,
Jan Ferguson, Jette Sorensen
Publicity - Janice Metz
Show - Hellena Jones-Elbling
Co-Chair - Brad Smith
Shop Committee - President,
Vice President, Shop Instructors
Social - Grace Sato
Co-Chair - Joyce Watanabe
Sunshine - Felice Ganz
Trading Post - Gary Mitchell
Web Master - Jette Sorensen
Workshops - Jette Sorensen
Co-Chair - Joyce Watanabe

Board of Directors:

(2016) Steve Dover - Leda Rogers
(2017) Bruce Mensinger - Ana Maria Guimaraes
(2018) Rick Shaffer - Jette Sorensen

Contact Us: (310) 836-4611
P.O. Box 3324, Culver City, CA 90231

<http://www.culvercityrocks.org>
www.facebook.com/CCRM
www.twitter.com/culvercityrocks
<https://groups.yahoo.com/neo/groups/CCRM/info>

MEETING SCHEDULE

General Meetings are held the second Monday of every month* at 7:30 pm, usually in the Multi-Purpose Room in the Veterans Bldg., 4117 Overland Ave.* Enter from the rear door.

*Consult the Nugget or the website for occasional location changes

Guests are always welcome.

Executive Committee Meetings are held the second Monday of every month* at 6:30 p.m. in the Multi-Purpose Room in the Veterans Bldg. Auditorium. All club members are welcome.

*Meeting days occasionally change due to federal holidays or to accommodate the Fiesta Of Gems Show.

DUES & FEES

One time Initiation Fees:

Individuals	\$20.00
2 Persons/Same Address	\$35.00
Juniors	\$15.00

Yearly Membership Dues:

Individuals	\$25.00
2 Persons/Same Address	\$35.00
Juniors	\$10.00

(After July 1, dues are \$15.00, \$25.00 and \$5.00 respectively.)

Replacement badge	\$15.00
-------------------	---------

SHOP INFORMATION

The shop is open to members in good standing over the age of 18 who sign an indemnification form. Junior members (13 - 18) must be accompanied by an adult. Instruction is available at all sessions. Practice slabs are available.

Location: 10866 Culver Blvd. in Culver City (behind the FOCCSH building (Boy Scout clubhouse) and next to the paddle tennis courts)

Shop Phone: (310) 836-4611

Hours:

Tuesday 7 pm – 9:30 pm - Rick Shaffer

Wednesday 10 am – 2 pm - By appointment,

see www.culvercityrocks.org/lapshop.htm

Thursday 10 am – 2 pm - Vern Lowe

Saturday Noon – 4 pm - Lynne Lukert

Sunday Noon – 4 pm - Jette Sorensen

If no one shows, the shop may close early. If you plan to arrive more than a half hour after the opening time, phone the instructor at (310) 836-4611

The Nugget

The deadline for submissions is the 15th of every month. All articles or notes without a byline are written by the Editor. Permission to copy is freely given as long as proper credit is noted.

The Nugget accepts paid advertisements. The cost for an eighth of a page (approx. 2" high x 3.5" wide) is \$7 per insertion, payable in advance. Ad location is at the discretion of the Editor. Ad layouts, copy, or business cards must be received by the 10th of the month. Send materials to Culver City Rock and Mineral Club, P.O. Box 3324, Culver City, CA 90231, Attention: Editor.



the NUGGET

VOLUME 57 CULVER CITY ROCK & MINERAL CLUB

ISSUE 9
SEP 2016

CCRM&MC

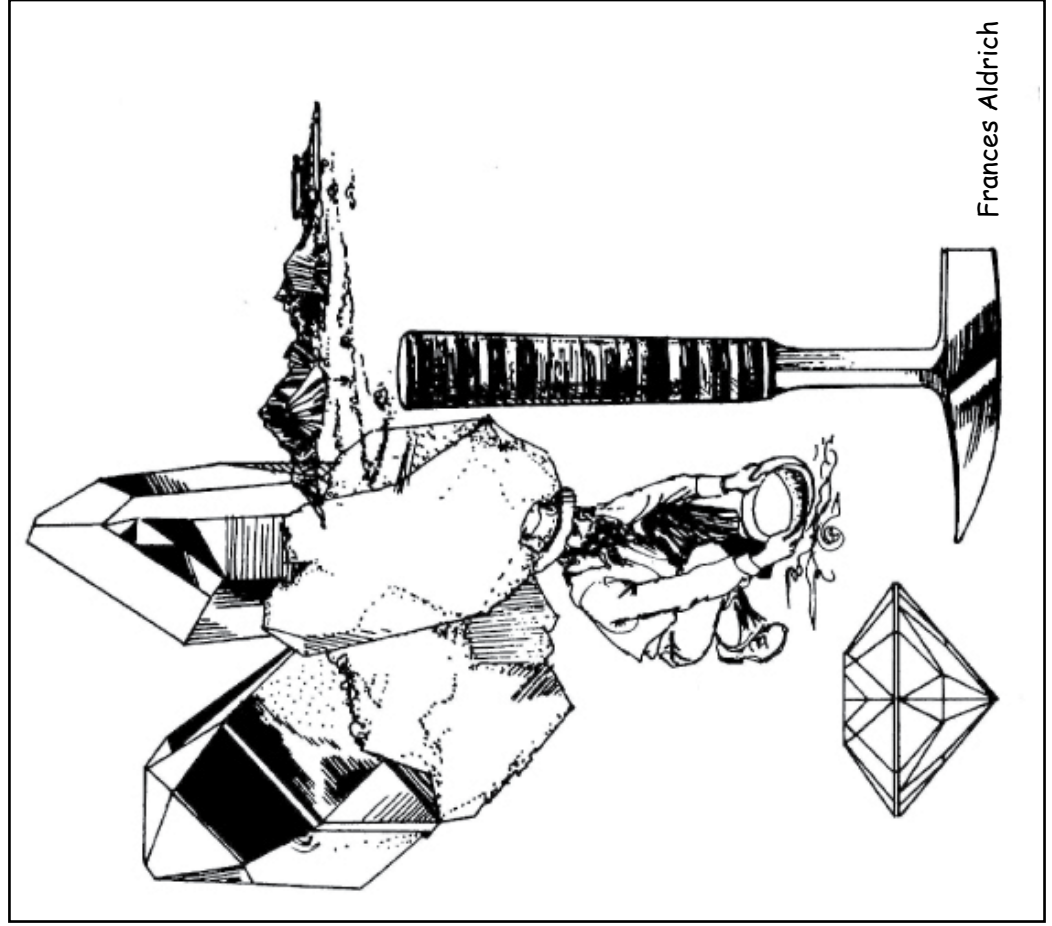
CULVER CITY, CALIFORNIA, USA

CULVER CITY ROCK & MINERAL CLUB, INC

Address Change Requested

The Nugget
P.O. Box 3324
Culver City, CA 90231

FIRST CLASS



Frances Aldrich