



the NUGGET

February 2017



Visitors Welcome

February 13 * 7:30 pm
'SHOW & TELL' and SILENT AUCTION

Veterans Memorial Multi-Purpose Room
4117 Overland Ave, Culver City

Our February meeting program will feature a member "Show & Tell" followed by our Silent Auction.

In a live showcase, members will have five minutes to share their collection or creation, allowing time for at least six presenters. Members wishing to present should send an e-mail to Program Chair Ken Rogers at: kenrogers4u@juno.com with your name, phone and describe what you would like to show. Time slots are on "first-come" basis.

After that we'll have our fun and exciting February SILENT AUCTION with slabs, rough, specimens, tools, jewelry supplies, jewelry, books and more.

Prior Silent Auctions provided a fun and exciting evening with wonderful bargains and treasures. Everyone checks out the items displayed and writes their bids on the bid sheets until the bidding period comes to a close with the final instruction "all pencils down."

Auction items will include donations the Club has received over the past year and items donated by members and friends. These raise money for Club activities.

Please donate to the auction! We request that each member or guest donate three to six items such as specimens, slabs, cabochons, tools, jewelry findings, finished jewelry, related books or magazines, etc. All donations are appreciated. Bring items to the Club Shop or to the meeting. Clearly label "For Silent Auction" and identify

specimens, slabs or rough if you can (ex: "tourmaline from Oceanview Mine"). Items brought to the auction will be incorporated, time permitting, or will be reserved for our Club summer picnic auction.

Please volunteer to help before, during and after the auction with set up, tallying bid sheets or clean up. To volunteer, or for donation drop off, please email me at: kenrogers4u@juno.com

Ken Rogers
Program Chair



Desperately seeking silent auction donations!

PRESIDENT'S MESSAGE

Greetings fellow Club members, rock hounds, and lapidary enthusiasts. We welcome anyone interested in the earth sciences and lapidary arts to attend our monthly meetings. We always enjoy meeting new people interested in geology and mineralogy and hope you can join us as our guest if you are in the area.

We have a fun Silent Auction on Feb. 13 that will include members' treasures and special samples from donations at the Shop. Don't forget to bring a contribution. You are guaranteed to leave with new specimens for your own collection and fun memories of out-bidding old and new friends.

Our goal is to create fun, interesting monthly meetings. We invite suggestions, ideas and knowledge for enriching the Club. We are a diverse, non-judgmental Club, welcoming everyone's interests and contributions from novice to expert. Note that all of our meetings this year will be in the Multi-Purpose Room at the Veterans Memorial Auditorium, except for the December holiday party.

The *Fiesta of Gems Show* organizing continues under the capable guidance of Hellena Jones-Elbling. Volunteers are always needed and the Show Committee welcomes everyone's suggestions and gifts of time in the coming months. Thanks in advance to everyone who can help. Hellena is circulating volunteer rosters now.

Geology in celestial volume: In the first half of February, sky watchers may get a chance to see a comet swing by Earth. After rounding the sun in Dec. 2016, Comet 45P/Honda-Mrkos-Pajdusakova will be heading back to the outer solar system. On its journey it will

Continued Page 2



President's Message continued from page 1

make an appearance in our dawn skies, seeming to zip across the constellations Aquila and Hercules.

On Feb. 11, it will reach its closest point to Earth at only 7.7 million miles and will be the best time to view this icy visitor, since its brightness may reach naked-eye levels and it should appear as a tiny but distinct fuzz ball in the sky. Note: a very accessible site for visible astronomy is earthsky.org/.



We welcome the year of the Rooster on the first day of the Spring Festival or Chinese New Year and bid farewell to the Monkey on Jan. 28. Noted Roosters include Catherine the Great, Amelia Earhart, Rudyard Kipling, Serena Williams, Bob Marley, Neil Young, and Helen Mirren.

Have a wonderful February everyone.

Darrell Robb
President

MINERAL REPORT: ORTHOCLASE A Galactic Mineral!

Orthoclase is one of the potassium feldspars, also known as K-spars. Its mineral formula is $KAlSi_3O_8$. The characteristic feldspar cleavage is good in two directions, meeting at almost 90° , which also gives orthoclase its name (ancient Greek for "straight fracture").



Orthoclase can be faceted or made into a cabochon.

Orthoclase is polymorphous with microcline and sanidine, the other minerals of the potassium feldspar series. Most of the time, it is almost impossible to distinguish between them in hand sample, as their only macroscopic distinguishing feature is their crystal structure. Microcline crystallizes in the triclinic crystal system. Orthoclase and sanidine both form in the monoclinic system, but orthoclase forms at low temperatures and cools slowly, so its crystals tend to be more ordered than those of sanidine.

In thin section, orthoclase can be distinguished from microcline because it lacks the gridiron twinning pattern. Distinguishing orthoclase from sanidine is harder, as

WELCOME NEW MEMBERS

Paula Byron
Andrea Fabian
Patrice Fisher
Amy Hyde

Jack O'Brien
Janine Perron
Krista Sawchuk
Andrea Stein

MARCH 13 PROGRAM: JADE! The What, Why and How of 21st Century Jade

Renee Newman presents 21st Century Jade: What it is, why it is prized and how it is tested and valued.

Learn to distinguish between imitations, fake jade, jadeite and nephrite jade – and treated and untreated jade. Using jewelry and carved examples, Renee will discuss jade value factors and show a few examples of the highest priced jade pieces. Renee comes to our Club following a presentation at the Tucson Show.

you need to find the $2V$ angle, which can be difficult. Orthoclase has a larger $2V_x$ angle than sanidine, if you can find a suitable interference figure. Typically, orthoclase is low relief, with very low interference colors, and exhibits parallel extinction.

Orthoclase occurs in a wide variety of colors, including white, yellow, pink, orange, light blue, light green, brown, and gray. Its streak is white with a hardness of 6 on the Mohs scale. When twinned, orthoclase typically forms Carlsbad twins, though Baveno and Malebach twins have also been reported.

Moonstone is a gem variety of feldspar, composed of intermingled orthoclase and albite. Their intergrowth produces the characteristic moonstone adularescence. Orthoclase itself can be faceted or turned into cabochons. More common potassium feldspars are used as raw material for glass, ceramic, and scouring powder manufacturing.

Potassium feldspars are common in felsic igneous rocks, such as granite, rhyolite, syenite, and granitic pegmatites. Orthoclase is associated with quartz, micas, garnets, topaz, and tourmaline. The rover Curiosity has found high levels of orthoclase in Martian sandstone, which may suggest that it underwent repeated melting.

Minda Moe
Mineral Chair

Image by Rob Lavinsky, iRocks.com – CC-BY-SA-3.0

CALIFORNIA FEDERATION OF MINERALOGICAL SOCIETIES

Our Club has an opportunity to enter a competitive exhibit at the California Federation Mineralogical Society (CFMS) Show and Convention on June 9-11, 2017 in Ventura.

We would need to decide the topic for our exhibit case, nominate a member to lead this endeavor and collect materials to exhibit.

This can be discussed at our future meetings. An application would need to be completed and returned to the CFMS as soon as a decision is made. The information is on their website: cfmsinc.org under Shows, then select the CFMS Show in June.



CFMS Camp Zzyzx (March 21 - April 1) is full for people using the dorms, BUT you can get on a waiting list, OR if you have an RV and will not need a dorm room, then there is plenty of room. The application deadline is March 1. Camp Zzyzx is limited mainly by the amount of dorm space, not applicants. The cost is \$400 for one week.

For those of you wishing to go to Camp Paradise (August/September), please wait until Camp Zzyzx is over and then the application forms will be available online at the CFMS website.

The January CFMS trip to Lavic Siding was canceled due to weather.

Rick Shaffer
Federation Chair



Camp Zzyzx is in the Mojave Desert near Baker, CA

SHOP NEWS

Shop schedule

Check our website, culvercityrocks.org, for scheduled open time and timely information, or call the shop at 310-836-4611 after the scheduled opening time to confirm that an instructor has arrived. Instructors have the option of closing early if nobody shows up within the first 30 minutes.

Limited parking in back of the shop is open for use. Park on the asphalt, off the alley concrete to avoid a parking citation. Please respect the space reserved for the shop instructor next to the paddle tennis court.

The Shop has made its annual purchase at Quartzsite, including new diamond top plates for the 8-inch flat lap, and the normal consumables such as gloves, plastic storage bags and tape.



Bruce Mensinger recently rebuilt the water distribution system and after some final tweaking the leaks that were flooding the Shop floor have stopped.

Bruce also announced at the last executive meeting that he will no longer support the Shop as an instructor or main repairman.

We wish to give a giant THANK YOU to Bruce for the many years of service he has donated to the Shop.

On behalf of the Shop Committee
Steve Dover

HAPPY BIRTHDAY

Peter Baram
David Eggers
Paul M. Gomez
Stella Green
Marisa Grimes
Barbra Hippensteel
Johnny Hjorth
Frank Hollis



Bruce Logan
Dave Lyon
Lynne Lukert
Mary Lyon
Chelsea Novalle
Ken Rogers
Dyana St John
Andrea Stein
Kal Yee

FIESTA OF GEMS SHOW UPDATE



Our Fiesta of Gems Show features over 30 dealers.

The Show Committee is eagerly preparing for the Fiesta of Gems Show taking place July 8 & 9! This is an anticipated event not only for Club members, but also the community and vendors. Our theme this year is Amethyst. We'll have over 30 vendors who'll bring us rough slabs, cabochons, beads, finished jewelry, findings, wire, tools and much more. We'll also have workshops, demonstrators, hourly raffles, and a grand prize raffle on Sunday. Entrance and parking is free. More information about our vendors, workshops and demonstrators will be posted on our website under Fiesta of Gems as information is received. Our Show is a favorite among vendors and attendees because of YOU! Last year we had many first-time visitors and they loved it.

Like any great production, it takes team effort. Here are some areas where we need your help:

- Distribute show fliers. You can pick them up at the Shop NOW.
- Post information about the show on social media.
- Members will soon receive \$10 in raffle tickets to sell on behalf of the club. You can purchase them yourself or sell to family and friends. Money and stubs will be collected at the club. The proceeds are donated to a worthy cause. In the past we've donated to Culver City Schools or the Boy Scouts.
- Donate a piece of finished jewelry or specimen for the hourly door prize. Bring them to our Club meeting or drop them off at the Shop. Make sure your name, what you are donating and 'Fiesta of Gems' is clearly labeled so we can keep track of your generous donation.

- We need donations of plants and jewelry-related magazines for the Show. Beginning in June, magazines can be left at the shop. Plants can be dropped off on Friday, July 7 at the Auditorium.

- If you'd like to showcase your craftsmanship and have your designs in the display case at the Show, contact Steve Dover at skdover@yahoo.com and put your name on the list.

- Pick a committee and/or areas you'd like to serve: Security, Front Desk check-in, Kids Corner, Club Desk, Geode Cutting, Magazine Stand, Photography, Plants, Hospitality, or Floater that serves where needed.

- Help with set up, loading & unloading, and clean up. As we get closer to our event, I'll reach out with additional specifics.

Please contact me at Hellena@creationsbyhellena.com and let me know where you are able to help. Let's make this another great Fiesta of Gems Show!

Hellena Jones Elbling
Fiesta of Gems Show Chair

2017 DUES

Annual Member dues cover Jan. 1 through Dec. 31. If you joined late in 2016, the 2017 membership payment is still due Jan. 1. Dues are \$25 for one member, \$35 for two people at the same address, and \$15 for juniors. If you are receiving the Nugget via snail mail, please consider the digital version via email as printing and mailing costs are substantial.

EXECUTIVE MEETING MINUTES January 9

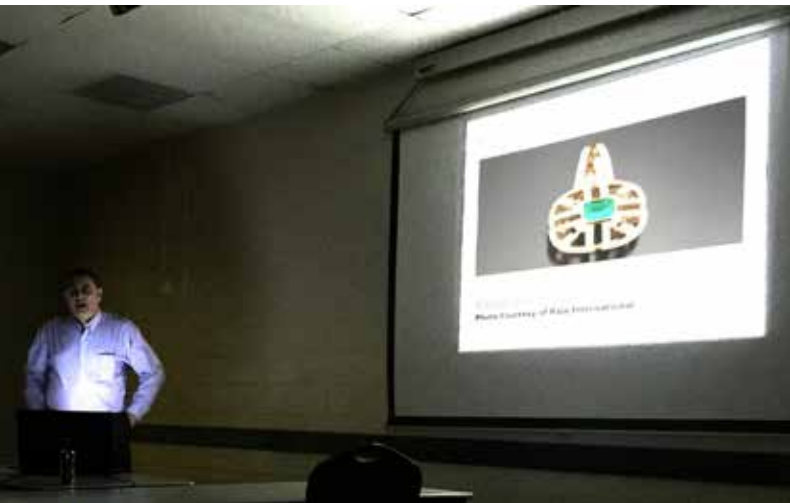
Those present: Steve Dover, Stephanie Dangott, Franne Einberg, Barbara Fier, Ana Maria S. Guimaraes, Johnny Hjorth, Bruce Mensinger, Janice Metz, Darrell Robb, Ken Rogers, Grace Sato, Mary Ellen Shaffer, Rick Shaffer, Brad Smith, Jette Sorensen. Meeting was called to order by President Darrell Robb at 6:34 pm.

Publication Report Darrell Robb indicated approval was to be obtained at the general meeting for the Club to renew the Adobe annual license. Jette Sorensen reported the printing service provider had been replaced to lower cost. A discussion followed about charging for hard copies of the newsletter, as done by other clubs.

Show Report Brad Smith informed all was on target for the show. Darrell Robb indicated tear-off flyers need

Continued on page 6

JANUARY PROGRAM REPORT: BIRTHSTONES



Our January Program featured Walter Lombardo, a geologist and owner of the Nevada Mineral & Book Company in Orange, CA. He provided

an interesting presentation on the history of birthstones and how they are constantly changing due to marketing efforts and trends. The origin of birthstones is believed to be Aaron's breastplates, which were ornated with 12 stones representing the tribes of Israel, which over time were referred to as apostle stones, angelic stones, zodiac stones and birthstones.



Spinel



Zircon

In 1909 Tiffany & Co. proposed American stones for each of the months to boost their jewelry sales and in 1912 the National Association of



Tourmaline



Spinel

Jewelers proposed their own list to compete. Mr. Lombardo listed the various birthstones for each month, explaining why new stones were added to the list over time.

Ana Maria S. Guimaraes
Recording Secretary



Sardonyx



Alexandrite

FEBRUARY / MARCH SHOWS

February 17 - 26: INDIO, CA

San Geronio Mineral & Gem Society
Riverside County Fair & National Date Festival
82-503 Highway 111
10 - 10 daily
Contact: Bert Grisham, (915) 849-1674
Email: bert67@verizon.net

February 25 - 26: VALLEJO, CA

Vallejo Gem & Mineral Society
Solano County Fairgrounds, McCormack Hall
900 Fairgrounds Drive
10 - 5 daily
Contact: Dan Wolke, 707 334-2950
www.vjgems.org

March 4 - 5: ARCADIA, CA

Monrovia Rockhound
L. A. County Arboretum & Botanical Garden
301 North Baldwin Avenue
9:00 - 4:30 daily
Contact: Jo Anna Ritchey, (626) 359-1624
www.Moroks.com

March 4 - 5: LEMOORE, CA

Lemoore Gem & Mineral Society
Lemoore Trinity Hall, 470 Champion Street
Sat 10 - 6; Sun 10 - 4
Contact: Christopher Wertinberger, (559) 309-3433
Email: kim-morrell@hotmail.com

March 4 - 5: VENTURA, CA

Ventura Gem & Mineral Society
Ventura County Fairgrounds, 10 W. Harbor Boulevard
Sat 10 - 5; Sun 10 - 4
Contact: Terry Wilson, (805) 312-8467
www.vgms.org

March 11 - 12: SAN MARINO, CA

Pasadena Lapidary Society
San Marino Masonic Center
3130 Huntington Drive
Sat 10 - 6, Sun 10 - 5
Contact: Marcia Goetz, (626) 260-7239
Email: pasadenalapidary@aol.com
www.PasadenaLapidarySociety.org

Executive Meeting Minutes continued from page 4

to be ready for dealers to hand out at their shows; Mr. Smith confirmed he would get them done the next day. Barbara Fier committed to work with Bruce Mensinger to finalize the postcards, potentially in time for the Quartzsite show the weekend of Jan. 18. Mr. Smith recommended printing the same number as last year.

Treasurer Report Fran Einberg reported the Club was solvent. She asked Brad Smith to provide the list of members for insurance purposes. She also notified that the Club needed to identify an auditor for its books annual audit, as the current auditor has retired.

Board of Directors The Board of Directors held a meeting where a motion was approved to call an audit of the Club's books.

Parliamentarian Report Johnny Hjorth requested a copy of the by-laws and Rick Shaffer committed to providing.

Federation Report Rick Shaffer reported the Federation's camps were open and information was available at their website cfmsinc.org. Camp Paradise would take place in January and the Zzyzx Camp on March 26-April 1. Ken Rogers indicated he would be a guest speaker at the joint California and National Federations meeting in June in Ventura.

Membership Report Brad Smith reported he was setting up the 2017 membership database and would have an updated roster in April after the renewal deadline in March. He reported the Club had about 155 members.

Program Report Ken Rogers reported the February program would be the silent auction and expressed concern that there were insufficient items for auctioning. A discussion followed on recently donated items that needed to be sorted. The March program would be a lecture about jade.

Publicity Report Janice Metz reported she was starting publicity for the show, and asked to be notified of places to publicize that she may have missed. She has hit TV, radio, online sites, online groups and social media sites.

Social Report Steve Dover committed to reserving the picnic site, as it needs to be done six months in advance.

Shop Report Rick Shaffer and Steve Dover reported they would be procuring tools and material for the shop in Quartzsite. Bruce Mensinger indicated he intended to back off from Shop duties.

The meeting adjourned at 7:34 pm.

Ana Maria S. Guimaraes
Recording Secretary



Raffle prizes displayed at the 2016 Fiesta of Gems Show.

GENERAL MEETING MINUTES January 9

The meeting was called to order at 7:48 pm by President Darrell Robb. The Pledge of Allegiance was made and a quorum established.

- A motion was approved for the Club to pay the multi-purpose annual room rent and one of the annual Adobe licenses. The other is due later.
- Eight visitors and new members were introduced.
- Darrell Robb informed the photo of the newly elected officers would be taken at the February meeting.
- Darrell Robb informed the independent auditor of the Club's finances had retired and asked members for references.
- Stephanie Dangott provided information about the camps sponsored by the California Federation of Mineralogical Societies.
- Darrell Robb informed that the annual membership dues were due by the March meeting.
- Rick Shaffer informed the Quartzite Pow-Wow Show would take place January 18-22 and indicated information was available at the Quartzite Road Runner Gems and Mineral Club. He also said there were 47 shows in Tucson, most open to the retail trade.
- Ken Rogers reminded that the February program would be a silent auction and asked members to drop off donations at the shop. The March Program would be a lecture by Renee Newman about jade. Mr. Rogers also informed the California and the National Federations would hold their joint show in June in Ventura.
- A suggestion was made for the Club to invest in a Geiger counter for members to measure radioactivity in their collections.
- The meeting adjourned at 8:20 pm.

Ana Maria S. Guimaraes
Recording Secretary

The purpose of the CULVER CITY ROCK & MINERAL CLUB is to bring together persons interested in the earth sciences, to engage in research and study in this realm, and to assist members in the collection and preservation of rocks and minerals and in the study of lapidary and related arts.....culvercityrocks.org

Elected Officers for 2017

President - Darrell Robb
Vice President - Steve Dover
Treasurer - Franne Einberg
Recording Secretary - Ana Maria Guimaraes
Corresponding Secretary - Jan Ferguson
Historian - Bruce Mensinger
Parliamentarian - Johnny Hjort

Committee Chairs:

Education - Alexa Hunter
Federation Director - Rick Shaffer
Field Trips - Hans Baumann
Librarian - Bruce Mensinger
Membership - Brad Smith
Co-Chairs - Leda Rogers, Stephanie Dangott
Minerals - Minda Moe
Photography - Bruce Mensinger
Programs - Ken Rogers
Publications - Co-Chairs Barbara Fier,
Jan Ferguson, Jette Sorensen
Publicity - Janice Metz
Show - Hellena Jones-Elbling
Shop Committee - President,
Vice President, Shop Instructors
Social - Grace Sato
Co-Chair - Joyce Watanabe
Sunshine - Felice Ganz
Trading Post - Gary Mitchell
Web Master - Jette Sorensen
Workshops - Jette Sorensen

Board of Directors:

(2017) Bruce Mensinger - Ana Maria Guimaraes
(2018) Rick Shaffer - Jette Sorensen
(2019) Brad Smith - Grace Sato

Contact Us: (310) 836-461

P.O. Box 3324, Culver City, CA 90231

culvercityrocks.org

[facebook.com/CCRMCM](https://www.facebook.com/CCRMCM)

twitter.com/culvercityrocks

<https://groups.yahoo.com/neo/groups/CCRMCM/info>

MEETING SCHEDULE

General Meetings are held the second Monday of every month* at 7:30 pm, usually in the Multi-Purpose Room in the Veterans Bldg., 4117 Overland Ave.* Enter from the rear door.

*Consult the Nugget or the website for occasional location changes

Guests are always welcome.

Executive Committee Meetings are held the second Monday of every month* at 6:30 p.m. in the Multi-Purpose Room in the Veterans Bldg. Auditorium. All club members are welcome.

*Meeting days occasionally change due to federal holidays or to accommodate the Fiesta Of Gems Show.

DUES & FEES

One time Initiation Fees:

Individuals	\$20.00
2 Persons/Same Address	\$35.00
Juniors	\$15.00

Yearly Membership Dues:

Individuals	\$25.00
2 Persons/Same Address	\$35.00
Juniors	\$10.00

(After July 1, dues are \$15.00, \$25.00 and \$5.00 respectively.)

Replacement badge	\$15.00
-------------------	---------

SHOP INFORMATION

The shop is open to members in good standing over the age of 18 who sign an indemnification form. Junior members (13 - 18) must be accompanied by an adult. Instruction is available at all sessions. Practice slabs are available.

Location: 10866 Culver Blvd. in Culver City (behind the FOCCSH building (Boy Scout clubhouse) and next to the paddle tennis courts)

Shop Phone: (310) 836-4611

Hours:

Tuesday 7 pm – 9:30 pm - Rick Shaffer

Wednesday 10 am – 2 pm - By appointment,

see culvercityrocks.org/lapshop.htm

Thursday 10 am – 2 pm - Jan Ferguson

Saturday Noon – 4 pm - Lynne Lukert

Sunday Noon – 4 pm - Jette Sorensen

If no one shows, the shop may close early. If you plan to arrive more than a half hour after the opening time, phone the instructor at (310) 836-4611

The Nugget

The deadline for submissions is the 15th of every month. All articles or notes without a byline are written by the Editor. Permission to copy is freely given as long as proper credit is noted.

The Nugget accepts paid advertisements. The cost for an eighth of a page (approx. 2" high x 3.5" wide) is \$7 per insertion, payable in advance. Ad location is at the discretion of the Editor. Ad layouts, copy, or business cards must be received by the 10th of the month. Send materials to Culver City Rock and Mineral Club, P.O. Box 3324, Culver City, CA 90231, Attention: Editor.



the NUGGET

VOLUME 58

CULVER CITY ROCK & MINERAL CLUB

ISSUE 2

FEB 2017



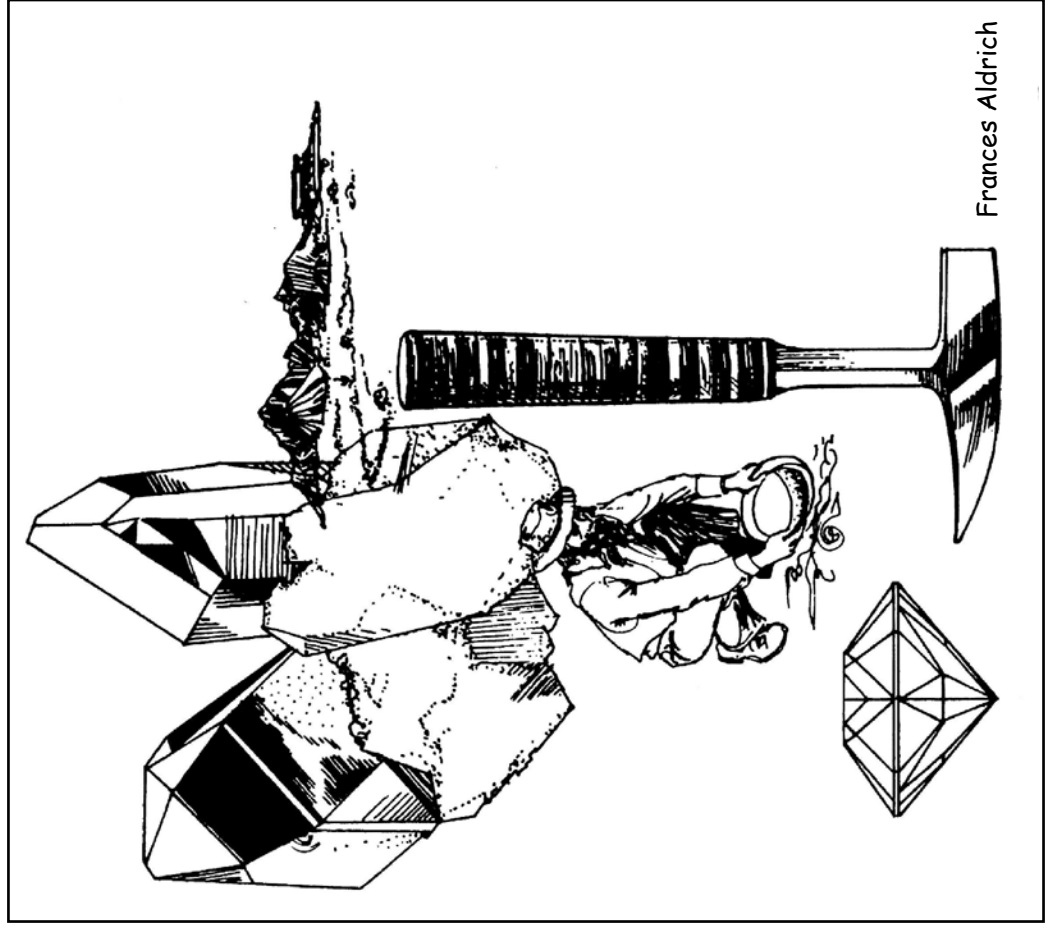
CULVER CITY, CALIFORNIA, USA

FIRST CLASS

CULVER CITY ROCK & MINERAL CLUB, INC

The Nugget
P.O. Box 3324
Culver City, CA 90231

Address Change Requested



Frances Aldrich