

the NUGGET

Volume 58

March 2017

Issue 3

Visitors Welcome

March 13 * 7:30 pm
21st CENTURY JADE

Veterans Memorial Multi-Purpose Room
4117 Overland Ave, Culver City

Please join us for an illustrated talk by famed gem-ologist and author, Renee Newman.

Newman will tell us what modern jade is, why it is prized, and how it is tested and valued. Her presentation will help you to:

- Understand why jade is so prized
- Tell the difference between jadeite and nephrite
- Determine which types of jadeite and nephrite are most valued and discuss the value factors, which are different
- Detect fake jade using visual, tactile and auditory non-technical clues
- Recognize when to be suspicious that jade has been treated with chemicals
- Appreciate contemporary jade



"Man on the Moon" made of high quality Siberian white nephrite jade and Wyoming Edward's black jade. White is the highest priced color for nephrite jade. Carved and photographed by Dale Blankenship in 2016.

Well known designers in the West, like Todd Reed and Roberto Cokin, are using nephrite jade in high-end jewelry.

Jadeite and nephrite prices are continuing to reach record highs at jewelry auctions. Before the 2008 Beijing Olympics, nephrite was viewed more as a trinket than as a worthy jewelry material. However, that changed when the Olympic medals were inlaid with nephrite and people learned that nephrite jade was the original Chinese "stone of heaven." Since then, jade prices have risen rapidly and the allure of nephrite jade in China has soared.

In her presentation, Newman will give us practical tips on how to distinguish fake and treated jade from natural jade using examples of modern jade jewelry and carvings.

Ken Rogers
Program Chair



"Tippy Toes" made of Alaskan nephrite jade. Carved and photographed by Dale Blankenship in 2015.

PRESIDENT'S MESSAGE

Greetings fellow rock hounds and gem enthusiasts. It is March already. What a difference a year makes! This time last year we were a little bewildered about the huge El Nino set up in the East Pacific that did not deliver the promised beneficence to Southern California. So it was a little late, but has made a difference already.



Here is hoping everyone in the Club takes the opportunity to get out to Death Valley and the Tejon areas for the wildflower and poppy bloom extravaganzas this year. It should be spectacular. Another great chance for hiking and rock hounding before the heat arrives will be the field trip to the Pisgah Crater and Cady Mountains area on March 11. The full details are highlighted below and also at the Club's website, culvercityrocks.org. See you in Barstow.

The Fiesta of Gems Show is but a few short months away, the first full weekend after the 4th of July holiday (July 8 and 9). We are cheering for a good turnout of volunteers for the show. We all enjoy the fun and great benefits of visiting our favorite vendors for this year's treasures, seeing youngsters and the young at heart enjoying fun games and educational demonstrations, and of course the great Raffle prizes. Please consider giving a few hours of your time helping set up on Friday July 7, or staffing a table at the entrance or selling raffle ticket or even volunteering for a while as a security representative during the actual show hours on Saturday and Sunday. There are lots of tasks to accomplish and if everyone pitches in a little for those few short hours, it makes it fun for everyone!

We have a great meeting coming up on March 13 where the highlight will be an informative presentation on contemporary Jade. It promises to be a fasci-

nating talk.

We had a rousing Silent Auction in February and everyone seemed to leave with a new bargain treasure. Thanks to everyone who helped set up, tear down and especially the big job of checking everyone out and collecting proceeds for the Club. THANK YOU!

We all look forward to hearing from Club members who were able to visit Quartzsite and Tucson in January and February.

Have a wonderful spring everyone. See you at the next meeting.

Darrell Robb
President

PISGAH CRATER FIELD TRIP MARCH 11

We will be collecting agates and jasper at Pisgah Crater and the Cady Mountains. Plan to meet up at 9:15 am the morning of Saturday, March 11 at the Valero Gas Station off the Barstow Road exit off of I-15. The address of the gas station is 491 Armory Road but it is right on the Barstow Road exit. From there, local rockhound Charlie Ferrell will be leading us to some of his favorite collecting sites. A 4x4 is a must, as we will be driving about 45 min off road to reach the collecting area. If you do not have a 4x4 but want to attend, please let me know and we can coordinate with attendees and see who has a free seat in their 4x4 for the off-road portion of the field trip. I can be reached at baumannh@gmail.com or at 310-980-4165 for more information or to confirm attendance.

Hans Baumann
Field Trips Chair



FEBRUARY PROGRAM REPORT SHOW & TELL and SILENT AUCTION

Ken Rogers introduced the Club members that would do a Show & Tell presentation. Charlene Aspray showed three accessories she had crafted and entered in the Metal Arts Society of Southern California Challenge, in which contestants receive a box of materials from which they must select five of six items for their creations and incorporate a new item. One of Ms. Aspray's entries won first place in the competition. Darren Cokin showed smoking pipes he fashions out of stone. He uses a unique technique he developed to perforate the stone and keep the pipes in a single piece and has made pipes out of sandstone, alabaster, marble, lapis lazuli and labradorite among other stones. Steve Dover showed cabochons he makes out of jasper, which he selects and frames to highlight their unique designs resembling landscapes, animals and people. Darrell Robb made a presentation explaining the geological events that led to the formation of aquamarines in the Brazilian southwestern state of Minas Gerais.

After the presentations, a silent auction was held, where mineral specimens, beads, jewelry and tools could be bid on.

Submitted by Ana Maria S. Guimaraes
Recording Secretary



*Charlene's winning entry
in the MASSC Challenge*



Darren's stone smoking pipe

Show & Tell



Steve's jasper cabochons

Silent Auction



Auction winners cashing out



Identifying an item



Closely watched bids

2017 DUES ARE DUE

The 2017 Annual Member dues are payable before or at March 13 monthly meeting. Dues cover Jan. 1 through Dec. 31. If you joined late in 2016, the 2017 membership payment is still due Jan. 1. Dues are \$25 for one member, \$35 for two people at the same address, and \$15 for juniors. If you are receiving the Nugget via snail mail, please consider the digital version via email as printing and mailing costs are substantial.

MINERAL REPORT: ZIRCON SMALL, YET IMPORTANT

Zircon falls into the nesosilicate mineral category, with mineral formula $ZrSiO_4$. Zircon crystallizes in the tetragonal crystal system, with H-M symbol $4/m\ 2/m\ 2/m$. In thin section, zircon can be identified by its high relief and high birefringence. It can exhibit weak pleochroism, and shows parallel extinction. It is measured at 7.5 on the Mohs scale of hardness, and exhibits conchoidal fracture.

Zircon can be green, blue, golden yellow, brown, red, or colorless. The gem-quality colorless specimens are sometimes called “Matura diamond.” Light-colored zircons are referred to as “jargoon,” which is a corruption of the Persian word *zargun*, meaning “gold-like.” Additionally, the yellow/orange/red varieties of zircon may be called “jacinth,” after the flower hyacinth. Zircon’s color is easily altered by heat treatment.

Zircon is a common accessory mineral in submafic igneous rocks, and can thus be found in metamorphic and sedimentary rocks as well. Large zircons are rare – they average about 0.2 mm in granitic rocks, though they can grow to be several centimeters long under some conditions. Larger zircons are especially common in mafic pegmatites and carbonatites.

While zircon is very resistant to heat and corrosion, it can be internally damaged by metamictization due to radioactive accessory elements such as uranium and thorium. Metamiction is the gradual destruction of the mineral’s crystal structure, due to alpha radiation. Metamict specimens are usually green, brown, or black, and have altered mineral properties. By the same radioactive process, zircon inclusions can sometimes

be identified by pleochroic halos, where the including rock has been discolored by exposure to radiation.

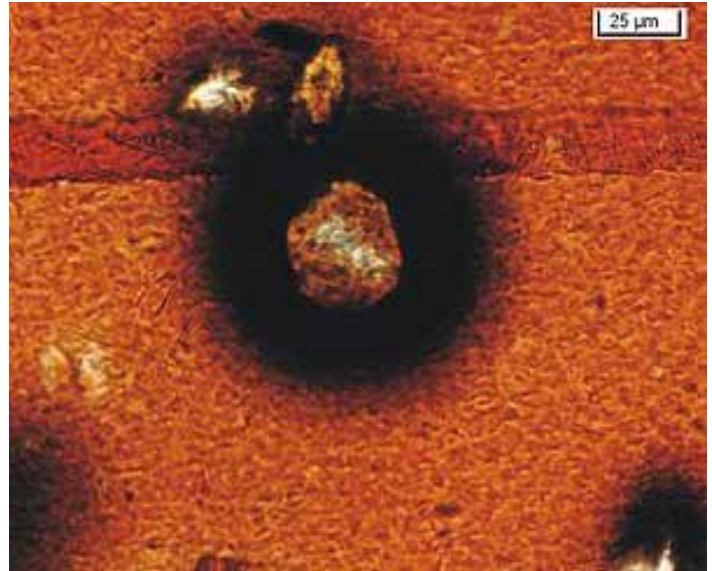


Photo by user:ChD/Wikimedia Commons/CC-BY-SA 3.0

Pleochroic halo as seen in thin section

Due to its resistance to non-radioactive alteration, zircon can be used to classify weathering in sediment, as part of the ZTR (Zircon-Tourmaline-Rutile) system. Additionally, zircon is a key mineral for the science of geochronology, due to its inclusion of radioactive elements. Analysis of uranium-lead ratios in zircons from Western Australia have yielded ages of 4.404 billion years.

Commercially, zircon is used by the ceramic industry to increase the opacity of glazes and other ceramics. Zircon is the most important source of zirconium, some compounds of which are used in refractory processes. Australia and South Africa account for 37 percent and 30 percent of the world’s supply of zircon, respectively.

Minda Moe
Mineral Chair

WELCOME NEW MEMBERS

David Crawford

Amy Hyde

Stephan Kunishima

Merga Robinson



HAPPY BIRTHDAY



Christian Burke 3/5

Alexa Hunter 3/7

Grace Sato 3/9

Chris Golden 3/9

Susan Rich 3/11

Ernest Lizarraras 3/20

Bruce Mensinger 3/23

David Crawford 3/28

SHOP NEWS

Shop schedule

Check our website, culvercityrocks.org, for scheduled open time and timely information, or call the shop at 310-836-4611 after the scheduled opening time to confirm that an instructor has arrived. Instructors have the option of closing early if nobody shows up within the first 30 minutes.

Limited parking in back of the shop is open for use. Park on the asphalt, off the alley concrete to avoid a parking citation. Please respect the space reserved for the shop instructor next to the paddle tennis court.

Shop News

The shop has recently purchased some 800 and 1000 grit silicon carbide polishing belts for use on our expando wheels. In the past these belts were only available up to 600 grit in silicon carbide. Rather than eliminate the popular 100 and 220 grit belts we will have the additional 800 and 1000 grit belts available at the last station.

Ask the instructor to show you how to easily interchange the belts on the drum. Always check that the belts are centered on the drums before powering up any of the machines. The reason we are still using silicon carbide belts is because of their low cost, less than two dollars per belt. A comparable belt in diamond would cost over \$50 and belts don't last long in the shop.

On behalf of the Shop Committee
Steve Dover

EXECUTIVE MEETING MINUTES February 13

Those present: Stephanie Dangott, Steve Dover, Franne Einberg, Barbara Fier, Felice Ganz, Ana Maria S. Guimaraes, Hellena Jones-Elbling, Bruce Mensinger, Darrell Robb, Ken Rogers, Leda Rogers, Grace Sato, Mary Ellen Shaffer, Rick Shaffer, Joyce Watanabe. The meeting was called to order by President Darrell Robb at 6:42 pm. The January Executive Meeting minutes were approved as read in the February Nugget.

Treasurer Report - Franne Einberg informed the Club needed to determine which organizations would receive the 2016 Fiesta of Gems raffle proceeds. A motion was approved to donate half of the proceeds to the Friends of the Culver City Scout House (FOCCSH) and half to the Farragut Elementary School of Culver City, another Culver City school or the Club's education fund, pending Ms. Einberg's research to determine whether Farragut Elementary is a 501(c)3 corporation and as to whether the funds can go to the Club's education fund. Ms. Einberg also reminded that receipts are required for reimbursement of Club expenses. In addition, Ms. Einberg provided the Club's 2016 Income & Expenses report for review; a few items were discussed and noted for correction.

Federation Report - Rick Shaffer reported that the American Federation of Mineralogical Societies (AFMS) issued updated rules for displaying minerals at the Federation shows and that a copy would be available at the Club's library. Mr. Shaffer also informed that the California Federation of Mineralogical Societies (CFMS) would provide a class on judging mineral displays.

Field Trips Report - Darrell Robb informed that Field Trip Chair Hans Baumann had arranged a trip to Pisgah Crater in the Mojave Desert on March 11.

Librarian Report - Bruce Mensinger reported he had acquired a couple of books for the Club's library.

Membership Report - Leda Rogers indicated she could no longer perform the Membership co-chair duties. Stephanie Dangott agreed to take them over.

Show Report - Barbara Fier indicated the postcards had been printed and were available for distribution and mailing. Leda Rogers indicated she had plants to donate. Franne Einberg reported the auditorium

Continued on page 6

Executive Meeting Minutes continued

contract had been executed. Hellena Jones-Elbling informed that instead of contracting food trucks, she would see if Cafe Laurent and other restaurants in the vicinity of the auditorium would provide discounts or promotions to the show patrons. She also indicated the table cloths needed to be cleaned or new ones could be purchased; research was to be done regarding cleaning service providers. Darrell Robb committed to inquiring with the City as to whether the table cloths had to be fire-proof. Ms. Jones-Elbling informed she would be sending alternative dates for the next show meeting.

Sunshine - Felize Ganz was asked to send a Get Well postcard to Jette Sorensen who had an accident while at Quartzsite.

Other - On behalf of DJ Gervais, Darrell Robb asked for support in staffing the Club's booth at the CFMS show, and added that Brad Smith, Ana Maria Guimaraes and he would be there.

The meeting was adjourned at 7:37 pm.

Submitted by Ana Maria S. Guimaraes
Recording Secretary

GENERAL MEETING MINUTES February 13

The meeting was called to order at 7:46 pm by President Darrell Robb. The Pledge of Allegiance was made and a quorum was established.

The January General Meeting minutes were approved as read in the February Nugget.

Three guests were introduced.

Darrell Robb and Steve Dover presented Bruce Mensinger with a lifetime Club membership for his service and dedication to the Club.

Darrell Robb announced that the AFMS and the CFMS were having a joint show at the Ventura Fairgrounds on June 9-11 and that the Club would have a booth there. He asked for volunteers to help staff the booth. Rick Shaffer informed the CFMS would be offering a training class prior to the show on how to judge mineral displays. He also indicated the AFMS had published updated rules for displaying minerals at the Federation shows; he would place a copy in the Club library and could supply soft copies upon request.

Rick Shaffer informed that the Field Trips Chair Hans Baumann was organizing a day trip to Pisgah

Crater on March 11. Agates and jasper could be collected.

Hellena Jones-Elbling announced that flyers and post cards for the 2017 Fiesta of Gems were available and encouraged members to take some to distribute. She also asked for donations of plastic pots for plants, as well as books, magazines and CDs. In addition, she encouraged members to supply prizes for the hourly raffle as an opportunity to showcase their craft. She reminded volunteers were needed for various jobs during the show and indicated she had a sign-up sheet.

Ken Rogers announced there would not be a trading post that evening; the program would be a Show & Tell presentation followed by a silent auction. He informed the March program would be a presentation on contemporary mining and uses of jade. Mr. Rogers also encouraged members to indicate their interests for future programs. Additionally, he informed that the Los Angeles Bead Society would meet at the Rotunda on March 1 at 7 pm and would have an interesting lecture on African amber.

Ken Rogers announced he was helping sell a collection of the Ornament magazine and had brought flyers with information. Leda Rogers informed she was having a sale of jewelry supplies and crystals.

The meeting was adjourned at 8:13 pm.

Submitted by Ana Maria S. Guimaraes
Recording Secretary



Bruce Mensinger received a lifetime Club membership

MARCH / APRIL SHOWS

March 11 - 12: SAN MARINO, CA
Pasadena Lapidary Society
San Marino Masonic Center
3130 Huntington Drive
Hours: Sat 10 - 6, Sun 10 - 5
Contact: Marcia Goetz, (626) 260-7239
Email: pasadenalapidary@aol.com
Website: www.pasadenalapidarysociety.org

March 11 - 12: SPRECKELS, CA
Salinas Valley Rock & Gem Club
Spreckel's Veteran's Hall
5th & Llano Streets
Hours: 10 - 5 daily
Contact: Gary Beck, (831) 679-2896
Email: garybeckpca@yahoo.com
Website: http://salinasrockandgem.pagecloud.com

March 11 - 12: TURLOCK, CA
Mother Lode Mineral Society, Modesto
Stanislaus County Fairgrounds
900 North Broadway
Hours: 10 - 5 daily
Contacts: Bud & Terry McMillin, (209) 484-4416
Email: terry.mcmillin@yahoo.com
Website: www.motherlodemineralsociety.com

March 18 - 19: SAN JOSE, CA
Santa Clara Valley Gem & Mineral Society
Santa Clara County Fairgrounds
344 Tully Road
Hours: 10 - 5 daily
Contact: June Harris, (408) 265-1422
Email: info@scvgms.org
Website: www.scvgms.org

March 25 - 26: ANGELS CAMP, CA
Calaveras Gem & Mineral Society
Calaveras County Fairgrounds
101 Frogtown Road
Hours: Sat 10 - 5; Sun 10 - 4
Contact: Dave Muster (209-518-8795) or Anna Christiansen (209-847-1173)
Email: annachristiansen7132@comcast.net
Website: www.calaverasgemandmineral.org

March 25- 26: ROSEVILLE, CA
Roseville Rock Rollers Gem & Mineral Society
Placer County Fairgrounds
800 All American City Blvd (off Washington)
Hours: Sat 10 - 5; Sun 10 - 4
Contact: Gloria Marie, (916) 216-1114
Email: gloriarosevillerockrollers@gmail.com
Website: www.rockrollers.com

April 1 - 2: CHICO, CA
Paradise Gem & Mineral Society
Silver Dollar Fairgrounds
2357 Fair Street
Hours: Sat 9 - 5; Sun 9 - 4
Contact: Kevin Wright, (530) 990-0211
Email: agateorca@ix.netcom.com
Website: paradisegem.org

April 1 - 2: TORRANCE, CA
South Bay Lapidary & Mineral Society
Ken Miller Recreation Center
3341 Torrance Blvd (entrance on Madrona Ave)
Hours: Sat. 10 - 5; Sun. 10 - 4
Contact: Nancy Pekarek, (310) 257-8152
Email: pekareks@hotmail.com
Website: southbaylapidaryandmineralsociety.com

April 7, 8 & 9: VISTA, CA
Vista Gem & Mineral Society
Antique Gas & Steam Engine Museum
2040 North Santa Fe Avenue
Hours: 9 - 5 daily
Contact: Ray Pearce, (760) 535 5524
Email: raysrocks@cox.net
Website: www.vistarocks.org

April 8 - 9: MARIPOSA, CA
Mariposa Gem & Mineral Society
Mariposa County Fairgrounds
5007 Fairgrounds Rd/Hwy 49 So.
Hours: Sat 10 - 6; Sun 10 - 5
Contact: Meredith Meehan, (559) 868-3535
Email: mgmc@sti.net
Website: www.camineralmuseum.com

The purpose of the CULVER CITY ROCK & MINERAL CLUB is to bring together persons interested in the earth sciences, to engage in research and study in this realm, and to assist members in the collection and preservation of rocks and minerals and in the study of lapidary and related arts.....culvercityrocks.org

Elected Officers for 2017

President - Darrell Robb
Vice President - Steve Dover
Treasurer - Franne Einberg
Recording Secretary - Ana Maria Guimaraes
Corresponding Secretary - Jan Ferguson
Historian - Bruce Mensinger
Parliamentarian - Johnny Hjort

Committee Chairs:

Education - Alexa Hunter
Federation Director - Rick Shaffer
Field Trips - Hans Baumann
Librarian - Bruce Mensinger
Membership - Brad Smith
Co-Chair - Stephanie Dangott
Minerals - Minda Moe
Photography - Bruce Mensinger
Programs - Ken Rogers
Publications - Co-Chairs - Barbara Fier,
Jan Ferguson, Jette Sorensen
Publicity - Janice Metz
Show - Hellena Jones-Elbling
Shop Committee - President,
Vice President, Shop Instructors
Social - Grace Sato
Co-Chair - Joyce Watanabe
Sunshine - Felice Ganz
Trading Post - Gary Mitchell
Web Master - Jette Sorensen
Workshops - Jette Sorensen

Board of Directors:

(2017) Bruce Mensinger - Ana Maria Guimaraes
(2018) Rick Shaffer - Jette Sorensen
(2019) Brad Smith - Grace Sato

Contact Us: (310) 836-461

P.O. Box 3324, Culver City, CA 90231

culvercityrocks.org

[facebook.com/CCRMCM](https://www.facebook.com/CCRMCM)

twitter.com/culvercityrocks

<https://groups.yahoo.com/neo/groups/CCRMCM/info>

MEETING SCHEDULE

General Meetings are held the second Monday of every month* at 7:30 pm, usually in the Multi-Purpose Room in the Veterans Bldg., 4117 Overland Ave.* Enter from the rear door.

*Consult the Nugget or the website for occasional location changes

Guests are always welcome.

Executive Committee Meetings are held the second Monday of every month* at 6:30 p.m. in the Multi-Purpose Room in the Veterans Bldg. Auditorium. All Club members are welcome.

*Meeting days occasionally change due to federal holidays or to accommodate the Fiesta Of Gems Show.

DUES & FEES

One time Initiation Fees:

Individuals	\$20.00
2 Persons/Same Address	\$35.00
Juniors	\$15.00

Yearly Membership Dues:

Individuals	\$25.00
2 Persons/Same Address	\$35.00
Juniors	\$10.00

(After July 1, dues are \$15.00, \$25.00 and \$5.00 respectively.)

Replacement badge	\$15.00
-------------------	---------

SHOP INFORMATION

The shop is open to members in good standing over the age of 18 who sign an indemnification form. Junior members (13 - 18) must be accompanied by an adult. Instruction is available at all sessions. Practice slabs are available.

Location: 10866 Culver Blvd. in Culver City (behind the FOCCSH building (Boy Scout clubhouse) and next to the paddle tennis courts)

Shop Phone: (310) 836-4611

Hours:

Tuesday 7 pm – 9:30 pm - Rick Shaffer

Wednesday 10 am – 2 pm - By appointment,

see culvercityrocks.org/lapshop.htm

Thursday 10 am – 2 pm - Jan Ferguson

Saturday Noon – 4 pm - Lynne Lukert

Sunday Noon – 4 pm - Jette Sorensen

If no one shows, the shop may close early. If you plan to arrive more than a half hour after the opening time, phone the instructor at (310) 836-4611

The Nugget

The deadline for submissions is the 15th of every month. All articles or notes without a byline are written by the Editor. Permission to copy is freely given as long as proper credit is noted.

The Nugget accepts paid advertisements. The cost for an eighth of a page (approx. 2" high x 3.5" wide) is \$7 per insertion, payable in advance. Ad location is at the discretion of the Editor. Ad layouts, copy, or business cards must be received by the 10th of the month. Send materials to Culver City Rock and Mineral Club, P.O. Box 3324, Culver City, CA 90231, Attention: Editor.



the NUGGET

VOLUME 58

CULVER CITY ROCK & MINERAL CLUB

ISSUE 3

MAR 2017



CULVER CITY, CALIFORNIA, USA

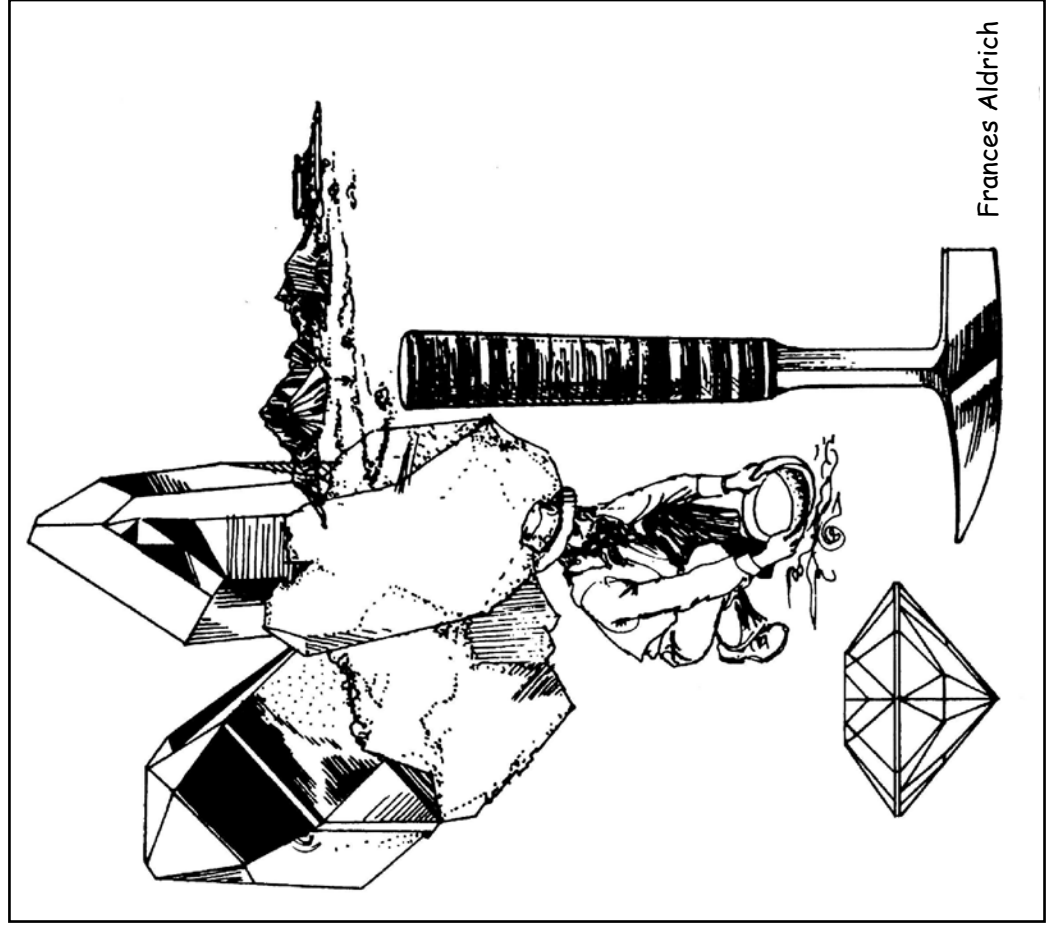
FIRST CLASS



Address Change Requested

The Nugget
P.O. Box 3324
Culver City, CA 90231

CULVER CITY ROCK & MINERAL CLUB, INC



Frances Aldrich