

The **CULVER CITY ROCK & MINERAL CLUB**, located in Culver City, California, brings together persons interested in the earth sciences to engage in research and study, to assist members in the collection and preservation of rocks and minerals and in the study of lapidary and related arts.



Jason Badgley

PRESIDENT'S MESSAGE

A major focus of our summer activities is our picnic on August 18. It's a wonderful time for new members to get to know others in the Club. There will be plenty going on for the kids, so bring the whole family. See the article for all the details.

For our newer members, I'd like to point out some of the Club benefits that are available at our Shop. First, we have a well-stocked library of books and videotapes for free loan to members. So if you're interested in gemology, meteorites, jade, lapidary, sculpture, or whatever, just find a couple books and check them out with the Shop instructor.

And while you're in the Shop, get a tour to see what members are doing with their lapidary and jewelry work. We're glad to help you learn to work with the lapidary material too, whether it be making a pair of bookends, a cab for your ring, or drilling a hole in a crystal to wear as a pendant.

Finally, we have a pile of mineral samples in back of the Shop which are free for the taking. Check it out. We're open five times a week.

Brad Smith
President

Visitors Welcome!

IRIS AGATES

Monday, August 13, 2018 @ 7:30 pm

An illustrated presentation by Jason Badgley

Jason discusses iris agates, what are they, how they are formed, where they are found, how to recognize, observe and photograph them. He will show us how he cuts and polishes them and we'll see wonderful examples of iris agate.

Iris agate can be found throughout the world: USA, Brazil, Australia, Indonesia and more. In Southern California, iris agate locals include: Acton, Malibu, Nipomo, the Owls Head Mountains and the Little Chuckawalas. It can form in nodules, seams, amygdals, wood casts and more. Learn how to search for iris agate rough, and how to recognize its special characteristics.

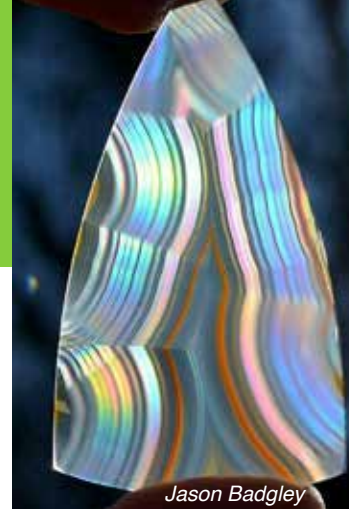
Jason will describe the best ways to view the iris phenomena and how to photograph it. He will show us videos showing the delicate way he polishes thin slices of Iris Agate on his 'bull wheel' and flat lap.

About Jason Badgley

Jason belongs to several West Coast lapidary societies and has displayed his work at various shows and fairs. He has won numerous awards for his workmanship including CFMS shows, and a "Best in Show" ribbon at the L.A. County Fair. His work appears in books and websites and he's given numerous presentations on local collecting. Through research he has located some of the best potential collecting sites and leads club and personal collecting trips. He sells and trades specimens worldwide. Jason also volunteers as a docent for the Malibu Creek State Park.

Ken Rogers
Program Chair

Join us
and learn
about iris
agates on
Aug. 13.



Jason Badgley

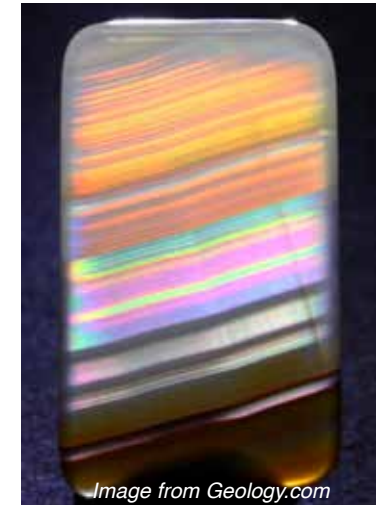


Image from Geology.com

Iris Agates
Monday, Aug. 13 @ 7:30 pm
**Veterans Memorial
Multipurpose Room**
4117 Overland Ave., Culver City

The Multipurpose Room is in the rear SW corner of the building, next to the park.

**FREE admission
FREE parking**

Last Call for Camp Paradise!



Camp Paradise: Your Creative Escape

Imagine spending a week (or two) making jewelry and learning new techniques and skills. Join the folks from the California Federation of Mineralogical Societies at Camp Paradise, north of Sacramento, for a variety of Earth Science workshops.

Sign up for Camp Paradise now before it fills up!

Metal Casting
Silver Fabrication
Chain Maille
Silver & Bronze Clay
Wire Wrapping
Beading

Faceting
Cabbing
Soft Stone Carving
Glass Fusing
Lampwork Beads
Intarsia

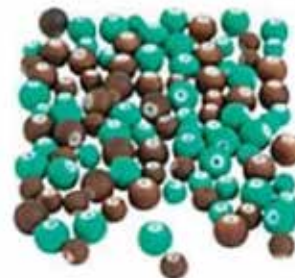
Cost: \$400/week includes lodging and meals

Week 1: Aug. 26 – Sept. 1

Week 2: Sept. 2 – 8

Download the application at:

<http://www.cfmsinc.org/ESStudies/ESSOverview.htm>



Enjoy a delicious barbecue lunch, then shop for bargains at rock bottom prices! If that's your idea of heaven then you'll love our *Annual Member Club Picnic and Silent Auction*.

Plan on bringing a dish to share. The Club provides burgers, hot dogs, buns, plates and condiments. Bring your cold beverage (non-alcoholic).

Please bring something nice to donate to the Silent Auction – and don't forget to bring cash for your purchases. Saturday, August 18, 10 am to 4 pm.

Jewelry Classes

Beginner to Advanced

Venice Metal Arts
 18 N. Venice Blvd.
 Venice CA

Day and Evening Sessions

email: VeniceJewelry@yahoo.com
 phone: (424) 645-2150

FIESTA OF GEMS: THANK YOU!!



Longtime Club member Woody Shaffer passed away on July 16, 2018. He was 92 years old. Woody was a member of the Club for decades and loved rock-hounding and all manner of lapidary work. He also volunteered at the Shop on Thursdays for many years.

Thank You Members!

Well...we did it again. Another successful Fiesta of Gems hosted by the Culver City Rock & Mineral Club. Our Show is the highlight of the year for members, vendors and patrons alike. What makes our Show special are its members and the dedication we put toward it. I would like to personally THANK a few key members of the Show team that worked tirelessly to make sure our show is the best.

A BIG Thank You to:

- Brad for mentoring me, being my partner and encouraging me to stretch my wings as Chair. You are a loyal friend and I'm so grateful for your support and friendship. Thank you for this opportunity.
- D.J. and Janelle for ensuring we have the "best" vendors in the house and securing great raffle prizes!
- Janice for your amazing social media outreach, advertising and securing great demonstrators for the workshops!
- Barbara for creating our beautiful postcards and newspaper ads!
- Fran for feeding us and keeping us hydrated!
- Ken for the fabulous bagels and cream cheese for breakfast!
- Jette for creating our signage and securing the yummy pastries for the cookie trays!
- Steve for helping Club members show off their talents in the display cases and helping secure our hourly raffle prizes from members!
- Darrell for keeping us fiscally on track and taking care of last minute expenses!
- Mary Ellen and Rick for decorating and making our Show festive!
- Janet & Darrell for all their work on the Raffle!
- Minda for helping kids expand their wonder of rocks and geodes!



- Adrienne for keeping an eye on the floor and helping wherever and whenever needed!
- Grace for helping put together the cookie trays – ALWAYS a hit with the vendors!
- John Riordan for the delicious lunch donation!
- Gary for overseeing security and ensuring our members' and vendors' safety!
- Alex for jumping in and renting a truck to help "get it done" on Friday and Sunday!
- Ms. Lorraine for sharing your amazing green thumb and making plant sales at our Show a highlight!
- ALL THE VOLUNTEERS who pitched in Friday, Saturday and Sunday and anyone I have not listed above, you are appreciated!!

And last...Thank you all for allowing me to be your Show Chair for the last 3.5 years! I've learned so much in my experience as Chair. Leadership is easier when you are surrounded by all the talented and dedicated members and vendors. With their support I was able to stretch my leadership wings and for that I'll always be grateful.

Not to worry...I'll be around next year – I'll always support CCRMC and the Fiesta of Gems!

Sincerely,

Hellena Jones Elbling
2018 Fiesta of Gems Show Chair

Mining Supplies & Rock Shop

miningsuppliesandrockshop.com

9565 "C" Ave. Ste. K, Hesperia, CA 92345

760-244-9642



Wed – Sat 10 am - 4 pm

Mining Equipment
Lapidary Equipment
Rough Rock & Slabs
Fossils
Jewelry Making Supplies

Classes & Field Trips
Metal Detectors
Beading Supplies
Hand-Made Jewelry
Gifts, Books & Magazines

JULY 9 PROGRAM REPORT

Geologist Jim Mills lectured about how wood becomes petrified. Petrified wood is the most abundant fossil evidence on Earth, being available all around the world. The earliest specimens date back to the Devonian period (380 million years ago), when plants first formed. The fossilization process is fairly short, though, as in favorable wet conditions wood will hydrolyze in a matter of a few hundred years. In polar regions, for instance, freezing temperatures reduce hydrolyzation, as frozen water cannot bring minerals into the wood.

A living wood cell has walls mainly made of cellulose and is filled with volatile chemicals and liquids that can evaporate, as well as empty space. Cell walls are cemented to other cell walls by the lamella. While the interior of the cells is volatile, cell walls and lamella are persistent, but porous, and let chemicals go in and out. In the fossilization process, liquid and volatile materials leave the cells and minerals are let in, filling the empty space. Thus, petrified wood still has organic materials: the cell walls and the lamella.

There are three essential conditions for wood to petrify:

1. There must be an anaerobic environment (or else fungus will destroy the cellulose);
2. There must be a source of petrifying mineral (e.g. silica);
3. There must be wood from a tree or shrub. Several types of minerals can petrify wood, but silicates (agate) are the most common. Agatized wood was the focus of this lecture.

Contact Us:

Culver City Rock & Mineral Club

(310) 836-4611

P.O. Box 3324, Culver City, CA 90231

culvercityrocks.org

[facebook.com/CCRMCC](https://www.facebook.com/CCRMCC)

[instagram.com/culvercityrocks/](https://www.instagram.com/culvercityrocks/)

twitter.com/culvercityrocks

<https://groups.yahoo.com/neo/groups/CCRMCC/info>

The Nugget, a publication of Culver City Rock & Mineral Club



Violent volcanic explosions are a prime catalyst of agatized wood formation, producing the three necessary conditions for it. Such explosions, occurring in strato-volcanos (rather than shield volcanos, which produce slow moving rives of lava), are caused by water vapor acting like a pressure cooker that creates volcanic ash. The explosion causes water vapor and ashes to go up and quickly fall over forests, creating anaerobic conditions, while the aftershocks cause trees to topple. Over time, as the volcanic ash is weathered, water dissolves the feldspar grains in the ash and transports silica, which precipitates in empty spaces of the tree cells.

The color of the fossil is completely unrelated to the wood's family, genus, or species. Although pure chalcedony is colorless and translucent, petrified wood color comes from trace elements that creep into the crystalline lattice of the silicon dioxide being precipitated. It takes only a few parts per million of trace elements to produce color. The same trace element can produce different colors. Iron, for instance, can produce red (from hematite), yellow (from limonite), black (from goethite), and green (from trivalent forms of iron oxides). When combined with manganese compounds, a rainbow of colors is produced.

Some petrified wood variations are: highly agatized wood, which refers to harder, better organized micro-crystals of chalcedony; opalized wood, which has high percentages of water in the silicon dioxide; and limb cast, which refers to agate filling a mold of the original tree branch.

Submitted by
Ana M. Strambi Guimaraes



AUGUST BIRTHDAYS

Krista Sawchuck	Aug 1
Barbara Fier	Aug 1
Jean Jensen	Aug 6
Joanie Rippner	Aug 6
Jose Santana	Aug 6
Laurence Chuck	Aug 10
Minda Moe	Aug 10
Leda Rogers	Aug 10
Joyce Watanabe	Aug 10
Damon Pressman	Aug 12
Lisa Talbot	Aug 13
Mike Huwe	Aug 16
Brad Smith	Aug 19
Jeannette Hjorth	Aug 26
Lorraine Murphy	Aug 26
Daniel Shoykhet	Aug 29

WELCOME NEW MEMBERS

Carol Amouraben
Mele (Mai Tai) DeVictoria
Addison Lloyd
Devon Lloyd
Margaret (Margot) Michon
Margaret Oberg
Laura Seffer
Sergio Serna
Jon Gowling
Melissa Eslava

www.culvercityrocks.org

UPCOMING SHOWS
for more Shows go to:
<http://www.cfmsinc.org/>

August 3 - 5: NIPOMO, CA

Orcutt Mineral Society
Nipomo High School, 525 Thompson Avenue
Fri-Sat 10 - 5, Sun 10 - 4
Contact: Sylvia Nasholm, (805) 481-0923
www.omsinc.org

August 4 - 5: SAN FRANCISCO, CA

San Francisco Gem & Mineral Society
San Francisco County Fair Building
9th Avenue & Lincoln Way, Golden Gate Park
Sat. 10 - 6; Sun. 10 - 5

August 18 - 19: TEHACHAPI, CA

Tehachapi Valley Gem & Mineral Society
Tehachapi Senior Citizen Center
500 East "F" Street
9 am - 4 pm daily
www.tvgms.org

September 15 - 16: CHICO, CA

Feather River Lapidary & Mineral Society
Silver Dollar Fairgrounds
2357 Fair Street
Sat 9:30 - 5; Sun 9:30 - 4
www.featherriverrocks.org

September 15 - 16: MONTEREY, CA

Carmel Valley Gem & Mineral Society
Monterey County Fairgrounds
2004 Fairgrounds Road
10 - 5 daily
www.cvgms.org

September 15 - 16: REDWOOD CITY, CA

Sequoia Gem & Mineral Society
Community Activities Building
1400 Roosevelt Avenue
10 - 5 daily
www.sequoiagemandmineralsociety.org

September 22 - 23: LODI, CA

Stockton Lapidary & Mineral Club
Lodi Grape Festival Grounds
413 East Lockford Street
10 - 5 daily
www.stocktonlapidary.com



SHOP INFORMATION

The shop is open to members in good standing over the age of 18 who sign an indemnification form. Junior members (13 - 18) must be accompanied by an adult. Instruction is available at all sessions. Practice slabs are available.

Location: 10866 Culver Blvd., Culver City (Behind the Boy Scout Club House, next to the paddle tennis courts.)

Shop Phone: (310) 836-4611

Hours:

Tuesday 7 pm – 9:30 pm - Rick Shaffer
Wednesday 10 am – 2 pm - By appointment,
email: shop-avail-appoint@culvercityrocks.org
Thursday 10 am – 2 pm - Brad Smith
Saturday Noon – 4 pm - Lynne Lukert
Sunday Noon – 4 pm - Jette Sorensen

If no one shows, the shop may close early. If you plan to arrive more than a half hour after the opening time, phone the instructor at (310) 836-4611.

JULY 9 GENERAL MEETING

The meeting was called to order at 7:37 pm by President Brad Smith. The Pledge of Allegiance was made. A quorum was not initially established, approval of the June meeting minutes was delayed.

One guest was introduced.

The following reports were provided:

Show Chair Hellena Jones Elbling thanked those who volunteered in the Show efforts and said she received good feedback from vendors.

Treasurer Darrell Robb provided a report on the results of the Show.

Program Chair Ken Rogers announced the August Program would be a lecture on iris agates.

Webmaster Jette Sorensen informed that sometimes a member's email provider rejects the Club emails with The Nugget; she asked members to notify the Club webmaster if they had not received the Nugget at the beginning of the month.

Brad Smith informed the summer picnic was scheduled on August 18, with food served at 10 am and the silent auction scheduled at noon. Steve Dover asked for donations for the silent auction.

Brad Smith pleaded for a volunteer to help with the arrangements for the refreshments for the monthly meetings, as no one was in charge this year.

Brad Smith informed the Bylaws Committee would be soon presenting to members proposed changes to the bylaws for approval.

Gary Mitchell informed there would be a trading post.

A quorum was established and the June General Meeting minutes were approved as read in the July Nugget.

The meeting adjourned at 7:52 pm.

Submitted by
Ana M. Strambi Guimaraes

JULY 9 EXECUTIVE MEETING

Those present: Robert Brownlee, Stephanie Dangott, Steve Dover, Felice Ganz, Alexa Hunter, Hellena Jones Elbling, Darrell Robb, Ken Rogers, Mary Ellen Shaffer, Rick Shaffer, Brad Smith, Jette Sorensen.

The meeting was called to order by President Brad Smith at 6:40 pm.

Brad Smith informed the board that a Culver City-based charity had approached the Club to be considered for donations.

The June Executive Meeting Minutes were approved as read in the July Nugget.

Steve Dover confirmed the summer picnic was scheduled on Aug. 18, with food served at 10 am and the silent auction scheduled at noon. He indicated a volunteer was needed to get the food. Rick Shaffer committed to bringing barbecue supplies. It was also noted that Joyce Watanabe was helping with Social Chair duties, but a backup was needed.

Darrell Robb indicated he had not yet received any payment from the Show demonstrators. He also mentioned that Lorraine Murphy could not find the receipts for her expenses related to the plants sales.

Brad Smith informed that Fran Einberg had volunteered to be the Show Chair next year.

Mary Ellen Shaffer requested the Sunshine Chair to send a thank you note to John Riordan for his contributions to the Show.

Darrell Robb informed the Club was solvent and provided a report on the Club's investments. A discussion followed regarding purchasing a new, larger storage unit for the Club.

Jette Sorensen noted that a few members who had been active in the Club had not renewed for 2018.

Brad Smith indicated his intention to have the Bylaws Committee finalize the bylaws draft and present the proposed changes to the membership. Hellena Jones

Elbling expressed concern about the general lack of volunteers and asked if the bylaws could be amended to enforce volunteer requirements as a condition of membership. Brad Smith clarified that amendments could be made on the membership form. Stephanie Dangott committed to editing the form, while Hellena would provide her with language that could be used. Rick Shaffer recommended to confirm whether the bylaws covered the membership form, for potential amendments to the related clauses.

Ken Rogers informed the August Program would be a lecture about iris agates.

Hellena Jones Elbling scheduled a Show debrief meeting for July 21.

The meeting adjourned at 7:20 pm.

Submitted by
Ana M. Strambi Guimaraes

THE NUGGET

Deadline for submissions is the 15th of every month. Articles or notes without a byline are written by the Editor. Permission to copy is freely given as long as proper credit is noted.

The Nugget accepts paid advertisements. The cost for an eighth of a page (approx. 2" high x 3.5" wide) is \$7 per insertion, payable in advance. Ad location is at the discretion of the Editor. Ads, copy, or business cards must be received by the 10th of the month.

Send materials to:

Culver City Rock and Mineral Club
Attention: Editor
P.O. Box 3324
Culver City, CA 90231

Elected Officers for 2018

President - Brad Smith
Vice President - Steve Dover
Treasurer - Darrell Robb (temporary)
Recording Secretary - Vacant
Corresponding Secretary - Mia Quiles
Historian - Robert Brownlee
Parliamentarian - Johnny Hjorth

Committee Chairs

Education - Alexa Hunter
Federation Director - Rick Shaffer
Field Trips - Eyra Allen-Lucas
Librarian - Andrea Fabian
Membership - Stephanie Dangott
Co-Chair - Jan Ferguson
Minerals Co-Chairs - Eyra Allen-Lucas,
Krista Sawchuck
Photography - Pam Leitner
Programs - Ken Rogers
Publications Co-Chairs:
Barbara Fier and Jan Ferguson
Publicity - Janice Metz
Show - Hellena Jones Elbling
Shop Committee - President,
Vice President, Shop Instructors
Social - Vacant
Co-Chair - Joyce Watanabe
Sunshine - Felice Ganz
Trading Post - Gary Mitchell
Web Master - Jette Sorensen
Workshops - Brad Smith

Board of Directors:

2018

Rick Shaffer - Jette Sorensen

2019

Brad Smith - Grace Sato

2020

Ana M. Strambi Guimaraes - Bruce Mensinger